

ferretto

MADE IN ITALY

ferrettohandles.it

f ferretto

La storia della nostra azienda è la storia della nostra famiglia. La famiglia Ferretto è una famiglia italiana e più precisamente di Cerea, quell'operosa zona a sud di Verona diventata famosa dalla metà del secolo scorso in poi, per il Mobile d'Arte e in Stile.

Uno straordinario tessuto produttivo fatto di artigiani e di piccole imprese che per oltre 50 anni ha portato i propri mobili in tutto il mondo ancora prima che la qualità e lo stile del "Made in Italy" diventasse così famoso ed apprezzato in ogni continente.

In questo contesto, nel celebre boom economico degli anni 60 e con il successo che i mobili veronesi riscuotevano nel mondo, mio padre Sante Ferretto, abile artigiano nella lavorazione del metallo, divenne un capace imprenditore fondando nel 1963 la sua prima azienda specializzata in ferramenta e componenti per il mobile.

Con passione ed esperienza in pochissimi anni ha costruito con le sue mani il successo della sua impresa che presto divenne leader nella componentistica del mobile d'Arte del distretto produttivo di Cerea: maniglie, pomoli, bocchette e chiavi fatte a regola d'arte da mio padre e dai suoi capaci collaboratori cominciarono ad essere apprezzate per la qualità dei materiali e la cura delle finiture da una clientela sempre più vasta in Italia e all'estero.

Nel 1978 nasce il marchio Euro-Fer, si completano i processi produttivi interni e si organizza un efficiente servizio logistico di magazzino e di distribuzione. Il successo sul mercato è immediato e consente di investire in ulteriori macchinari e in qualità tecnica. Il continuo dialogo con i designer del mobile e i sempre maggiori rapporti con la clientela internazionale ci hanno consentito poi di crescere e di ampliare la nostra produzione per il mobile moderno e contemporaneo, specializzandoci nella produzione di maniglie.

Il resto è storia recente: una storia di successi e di soddisfazioni che hanno fatto crescere negli anni la fama e la stima della nostra azienda, così come tutta la nostra famiglia è cresciuta qui, lavorando con passione ed impegno, al fianco di mio padre e degli abilissimi artigiani che ci hanno insegnato la loro preziosa arte.



Ancora oggi io e le mie sorelle Marisa e Cinzia conduciamo l'intero ciclo produttivo insieme agli eccellenti giovani collaboratori del nostro staff che ci permettono di essere un punto di riferimento nel settore a livello internazionale.

Molte cose sono cambiate, in tecnologia, in qualità, design e vastità di offerta ma non è cambiata la passione e l'attenzione che mettiamo in ogni singolo pezzo e questa passione speciale traspare nei nostri prodotti tanto che molti clienti in Italia e all'estero chiamano una nostra maniglia "una maniglia di Ferretto" così come si usa per i prodotti in cui si riconosce chiaramente uno stile distintivo.

Ecco le ragioni per cui in questo nuovo Catalogo Generale abbiamo deciso di presentarvi il nuovo marchio, che non potrebbe essere stato altro che il nostro nome, un'identità di prodotto che coincide con la nostra identità di famiglia italiana.

Stefano Ferretto



The history of our Company is the story of our family. The Ferretto family is an Italian family original from Cerea, located South of Verona, became famous in the middle of the past Century, and still famous, for the Art and Style furnitures.

An extraordinary texture of artisans and small entrepreneurs that, for more then 50 years, brought their furnitures around the world, before that the Made in Italy quality and style became famous and appreciated in every continent.

In this contest, during the 60's economic boom and with the success that the furniture makers from Verona were having around the world, my father, Sante Ferretto, capable artisan in the metal working, became a succesfull entrepreneur, creating, in 1963, his first company specialized in hardware and furniture components.

In few years, with passion and experience, he created the success of his Company, becoming a leader in components for Art furnitures in the Cerea productive district: handles, knobs, selvages and keys created with art by my father and his capable team, started to be appreciated for the quality of the materials and the cure in the finishing by a clientel everyday wider in Italy and abroad.

In 1978, the brand Euro-Fer was registered, and all the productive processes were completed. An efficient stock and distribuzione logistic service was created. The success in the market was immediate, and it allowed him to further invest in machineries and tecnical quality. The contant dialog with furniture designers and the strong relationship with foreign customers, allowed us to grow and implement our production of modern and contemporary furnitures, specializing in the production of handles.

The remaning part of the story is recent: a story of success and satisfactions that increased the fame and trust in our Company, and in our family that, working with passion and commitment side by side with my father and special artisans, taught us their precious art.





Nowdays, my sister Marisa and Cinzia and my self, run the entire productive cycle, along with excellence young staff members, that allow us to be' the reference point in the sector in an international scale.

A lot of things have changed: in technology, in quality, design and range of offers, but some of the things that have not changed are the passion and the attention that we give to every single piece. This special passion is visible in our products, so much that our Clients in Italy and abroad named one of our handles "one of Ferretto handles", like for the products were you can distinctively can recognize the style.

These are the reasons why we decided to present you in this General Catalogue our new brand, that could not be different from our name, an identity of product that fits the identity of the Italian family.



palette



L'Arte della finitura è uno dei punti di assoluta eccellenza di Ferretto Handles. In questa tavola sinottica troverete una gamma di finiture standard per tutta la nostra produzione. Ad ogni foto dei campioni di finitura è abbinato lo stesso codice che è riportato sugli oggetti all'interno del catalogo. Questa palette di finiture così come le lavorazioni di superficie del metallo possono essere utilizzate indifferentemente su qualsiasi degli articoli qui illustrati. La nostra decennale esperienza è inoltre a disposizione degli Operatori e dei Clienti per realizzare qualsiasi tipo di finitura personalizzata: con una vastissima gamma di gradazioni e di lavorazioni speciali della superficie il nostro staff è in grado di rispondere a qualsiasi richiesta anche la più ricercata o esigente.

La presente guida di campioni di finitura, così come tutto il materiale fotografico del catalogo, è stato calibrato e ottimizzato per avere una resa fedele all'oggetto reale, è tuttavia importante evidenziare come nella stampa si considerano sempre piccole variazioni cromatiche o di tonalità, di cui Ferretto Handles, come consuetudine, non potrà essere considerata responsabile. Vi ricordiamo inoltre che Ferretto Handles assiste i propri clienti con un ottimo e rapido servizio di campionatura.

"The Art of the finish is one of the points of excellence of Ferretto Handles. In this synopsis will find a range of standard finishes for all our products. For each photo of the samples of finish is combined the same code that is printed on the objects in the catalog. This palette of finishes as well as all the processing on the metal surface can be used indifferently on any of the articles herein. Our long experience is also available to operators and customers to create any type of custom finish: with a wide range of shades and special processing of the surface, our staff is able to respond to any request even the most sophisticated or demanding .

This guide samples of finish, as well as all photographic material of the catalog was calibrated and optimized to have a faithful rendering real object, it is important to highlight that in the press are always considered small variations in color or tone, Handles Ferretto can not be held responsible for these dischromy. Please note that Ferretto Handles assists its customers with excellent and fast sampling service."

01 patinato
patinated



20 avorio reale
royal ivory



28 oro lucido anticato
old glossy gold



10 oro valenza
valenza gold



23 tabacco
tobacco



39 oro verona
verona gold



22 oro opaco
matt gold



13 oro francese
french gold



17 vintage



26 antica fiesole
old fiesole



03 ottone lucido
polish brass



19 oro lux
gold lux



08 rame sfumato
shaded copper



25 osso antico
old bone



12 bronzo antico
antique bronze



40 oro fiorentino
florentine gold



37 rame lux
copper lux



35 moka
moka



04 bronzo sfumato
shaded bronze



02 bronzo lucido
polish bronze



31 avorio rustico -
rustic ivory05 nickel nero
black nickel16 argento antico
antique silver24 argento francese
french silver11 nero sfumato
shaded black09 nero
black07 cromato
chromed15 argento lux
silver lux33 titanio
titanium

14 peltro - pewter

06 nickel perla
pearl nickel27 argento lucido anticato
old glossy silver38 ferro antico
old iron21 grafite
graphite29 nickel satinato
satin nickel18 argento opaco
matt silver**Classic**

01 patinato - patinated
02 bronzo lucido - polish bronze
10 oro valenza - valenza gold
12 bronzo antico - antique bronze
17 vintage - vintage
21 grafite - graphite
23 tabacco - tobacco

Contemporary

03 ottone lucido - polish brass
04 bronzo sfumato - shaded bronze
05 nickel nero - black nickel
06 nickel perla - pearl nickel
08 rame sfumato - shaded copper
09 nero - black
11 nero sfumato - shaded black
14 peltro - pewter
16 argento antico - antique silver
26 antica fiesole - old fiesole
31 avorio rustico - rustic ivory
33 titanio - titanium
38 ferro antico - old iron

Trendy

07 cromato - chromed
13 oro francese - french gold
15 argento lux - silver lux
18 argento opaco - matt silver
19 oro lux - gold lux
20 avorio reale - royal ivory
22 oro opaco - matt gold
24 argento francese - french silver
25 osso antico - old bone
27 argento lux anticato - old glossy silver
28 oro lucido antico - old glossy gold
29 nickel satinato - satin nickel
35 moka - moka
37 rame lux - copper lux
39 oro verona - verona gold
40 oro fiorentino - florentine gold

FINITURE & DESIGN Le finiture delle maniglie permettono di valorizzare tipologie diverse di mobili di design: Classico, Contemporaneo, Moderno. Oltre alla forma della maniglia, le finiture sono in grado di coordinare e sottolineare i contrasti con vari elementi del mobile che possono avere un mix di varie influenze. **PROCESSO PRODUTTIVO FINITURE** Il processo galvanico è uno dei punti di forza di Ferretto Handles. Siamo costantemente alla ricerca di alta qualità, indi per cui lavoriamo solo con impianti in cui il ciclo galvanico è strutturato in modo tale che esso fornisca resistenza ed estetica senza precedenti. **FERRETTO ECO** Grazie allo sviluppo delle tecniche di produzione abbiamo migliorato tutti i processi produttivi in linea con la filosofia di sviluppo Ferretto eco-sostenibile.

FINISHES & DESIGN the finishes of the handles give something extra that fit with different kind of design furniture : classic, contemporary, modern. In addition to the shape of the handles, the finishes are able to coordinate and to emphasize contrast with elements that are a mix of various influences. **FINISHES PRODUCTION PROCESS** Galvanisation is one of Ferretto Handles's points of strength. We are constantly searching for top quality, due to this reason we work only with plant where apply high-quality and long-lasting galvanic finishes to die-cast zamak products. **FERRETTO ECO FRIENDLY** Thanks to development of production techniques, we have improved galvanic and also all the processes that break down and purify the waste production to create an increasingly more in line with the philosophy of environmentally sustainable development.



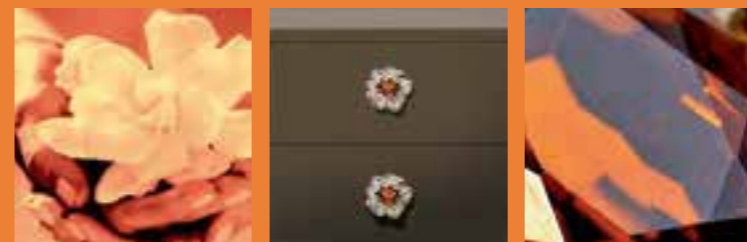
ferretto



jewel collection

"Una collezione preziosa e raffinata ispirata al gioiello floreale ed etnico, un complemento d'arredo vero e proprio non un semplice accessorio del mobile. La lavorazione a sbalzo delle superfici e l'uso di pietre sintetiche di elevatissima qualità conferiscono a questa collezione una luce spettacolare e unica.

A precious and refined collection inspired by floral and ethnic jewelry, a piece of furniture itself, not a simple accessory of furniture. The embossing of surfaces and the use of high quality synthetic stones confer to this collection a spectacular and unique light."



jewel collection
monfleur

art. 03 32 MO 07

Pomelli in metallo finitura cromo
decore floreale a sbalzo argento lucido.
Pietre sintetiche Topazio

Satin steele knobs with floreal decor in
brilliant silver finishing.
Syntetic stones Topaz



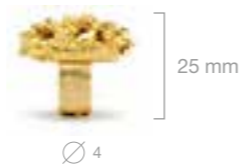
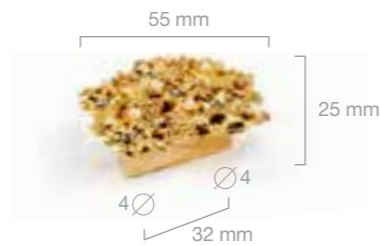
art. 03 35 MO 07



art. 0196 MO 19

Maniglia e pomelli finitura Oro lux con decoro floreale a sbalzo con incastonatura perline e strass.

Shining Gold Lux handle and knobs with floral embossed decoration and embedding beads and rhinestones.



jewel collection
bouquet



art. 0132 MO 19





jewel collection
bouquet



art. 0132 MO 19



art. 20 35 MO 19



jewel collection
bouquet



La serie Bouquet al completo, qui nella versione in Argento Lux con finitura in cromo con perline e topazi sintetici

The whole series Bouquet, here in Silver lux version with synthetic beads and topaz



art. 01 32 MO 07



art. 20 35 MO 07



art. 01 96 MO 07



art. 03 96 MO 07

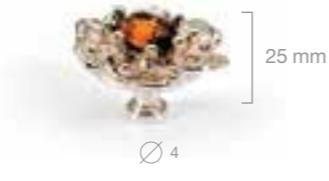
Maniglia in metallo finitura cromo
deco floreale a sbalzo argento lucido.
Pietre sintetiche Topazio

Chrome finished handle with Silver lux
floreale decor.
Syntetic Topaz stones

art. 03 96 MO 07

art. 03 32 MO 07

art. 03 35 MO 07



jewel



art. 03 32 MO 19



Un nuovo abbinamento per la fortunata
serie Monfleur con il set in oro lux e pietra
sintetica taglio brillante.

A new combination for the successful
Monfleur series with Shining Gold set
and synthetic cut brilliant stone.

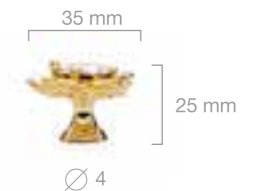
jewel collection
monfleur



art. 03 96 MO 19



art. 03 35 MO 19





art. 11 55 MO 10



art. 11 55 MO 19



art. 11 55 MO 15



art. 11 55 MO 16



L'infinita gamma di combinazioni possibili tra sfere traslucide di resina tecnologica o di vetro d'Arte, il piacere del tatto, la luce del cromo o dell'oro. Questi sono gli elementi della collezione Atomo disegnata da Lucio Dotto. Una serie di combinazioni e misure tutte perfettamente intercambiabili per comporre con personalità il proprio stile.

The infinite range of possible combinations between translucent spheres made of technological resin or art glasses, the pleasure of touch, the light of chrome or gold. These are the elements of the Atomo collection designed by Lucio Dotto. A series of combinations and sizes all perfectly interchangeable to compose your own style with personality.

atomo



sistema componibile brevettato, sfere in resina e vetro di Murano
patented modular system, resin spheres and Murano glass



design Lucio Dotto



189 160 AT FU 07



189 128 AT FU 07



189 64 AT FU 07



art. 189 AT FU

Maniglie con finitura cromo lucido con sfere in resina acrilica viola.

Glossy Chromed finished handles with acrylic resin purple spheres.

160 mm version: (S) (M) (L) (M) sfere/spheres





art. 189 160 AT PI 19



art. 189 128 AT PI 19

art. 189 64 AT PI 19

art. 189 AT WH

Maniglie con finitura in cromo lucido con sfere in resina acrilica bianche.

Glossy Chromed finished handles with acrylic resin white spheres.

160 mm version: (S) (M) (L) (M) sfere/spheres

Art. 189 AT PI

Maniglia finitura Oro Lux con sfere in resina acrilica Rosa.

Gold Lux finished handle with acrylic resin Pink spheres.

160 mm version: (M) (L) (M) (S) sfere/spheres





Art. 189 AT PE

Maniglia finitura Oro Lux con sfere in resina acrilica Avorio.

Gold Lux finished handle with acrylic resin Ivory spheres.

160 mm version: (M) (L) (M) (S) sfere/spheres



Art. 189 AT MA

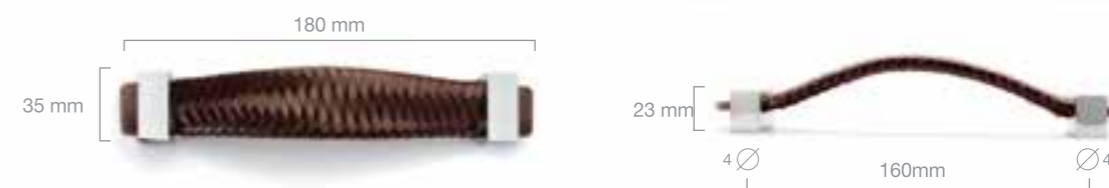
Maniglia finitura Cromo lucido con sfere in resina acrilica Marmo.

Glossy Chromed finished handle with acrylic Marble spheres.

160 mm version: (M) (L) (M) (S) sfere/spheres



art 28 160 412 07 LEA



art 27 128 412 07 LEA

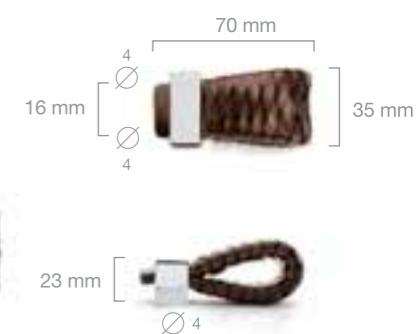


spina

Serie maniglie e pendente in Vera Pelle con intreccio spina colore Testa di Moro. Placche di fissaggio metallo finitura cromo, disponibile con interassi 160 e 128 mm

Series handles and pendant in real leather with woven plug Dark Brown. Fixing plates with chrome finish, available with interax 160 and 128 mm

art 26 16 412 07 LEA



cod. lea 34 160 04 12



cod. lea 37 01 07



Code lea 34 160 04 12 interasse / hole to hole 160 mm; lunghezza / length 178 mm; larghezza/width 25 mm;
Code lea 37 01 07 lunghezza / length 68 mm; larghezza / width 25 mm;

rivestite

Serie di maniglie in metallo con finiture Cromo e Oro lux, rivestite in Vera Pelle Nera, Marrone o Rossa, con vari intrecci e coperture decorative. Articolo disponibile con interasse 128 e 96 mm.

Series of metal handles with finishes Chrome and Gold lux, covered with Genuine Leather Black, Brown or Red with various weaves and decorative covers. Article available with interax 128 and 96 mm.



art. 128 128 LEA 09 19



art. 128 128 LEA 06 07



art. 128 96 LEA 10 19



SPECIAL CERAMIC



La ceramica è una delle più antiche arti dell'uomo, eppure rimane uno dei materiali d'avanguardia per la progettazione dei designers contemporanei. La collezione Ceramica di Ferretto Handles racchiude queste due anime: la tradizione della millenaria ceramica italiana con la sua tradizione decorativa e la ricerca di forme nuove ed emozionanti proprie del pezzo di Design.



Ceramic is one of the oldest arts of man, yet it remains one of the advanced materials for the design of contemporary designers. The ceramic collection of Ferretto Handles encompasses these two souls: the ancient tradition of the Italian ceramic with its decorative tradition and the search for new, exciting ways of project for the new designers.





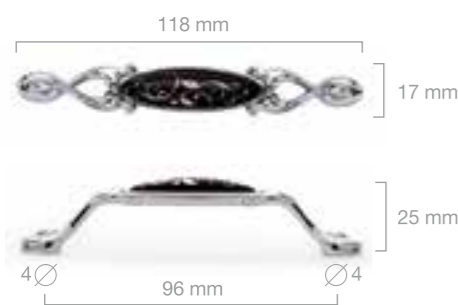
model **doroty**

La ceramica diventa "glamour" e ricercata nella nuova linea Ferretto Doroty. Il design leggero e floreale della maniglia è impreziosito dall'intarsio in ceramica, ovale o rotondo, e da una nuova serie di decori in oro, platino e in blu provençale.

Ogni decoro così come le finiture sono intercambiabili a scelta e gusto del Cliente. E' possibile inoltre realizzare decori personalizzati su richiesta.

Ceramic becomes "glamour" and sought in the new line ferretto doroty. The light and floreal design of this handle is embellished by an oval or round ceramic inlay, and by a new serie of gold, platinum and blue provençal decorations. Each decoration, as well as the finishing can be interchanged according to the customer tastes. It is also possible to realize personalized decorations.

maniglia grande interasse **128 mm**
large handle hole to hole 128 mm



maniglia piccola interasse **96 mm**
small handle hole to hole 96 mm



maniglia ovale interasse **32 mm**
oval handle hole to hole 32 mm



pomello
knob



COD. **12**
BRONZO ANTICO
ANTIQUE BRONZE



COD. **PO 24**
BLU PROVENÇALE
PROVENÇAL BLUE



art. 090 128 PO 24 12




art. 090 96 PO 24 12



art. 090 32 PO 24 12



art. 090 35 PO 24 12


finitura
finishing

COD. **19**
ORO LUX
GOLD LUX

decoro
decoration

COD. **PO 25**
ORO
GOLD

finitura
finishing

COD. **31**
AVORIO RUSTICO
RUSTIC IVORY

decoro
decoration

COD. **PO 28**
AVORIO
IVORY



art. 090 128 PO 25 19



art. 090 128 PO 28 31



art. 090 96 PO 25 19



art. 090 96 PO 28 31



art. 090 32 PO 25 19



art. 090 32 PO 28 31



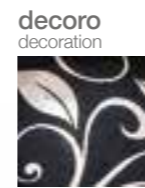
art. 090 35 PO 25 19



art. 090 35 PO 28 31



COD. **07**
CROMO
CHROME



COD. **PO 23B**
PLATINO
PLATINUM



COD. **16**
ARGENTO ANTICO
ANTIQUÉ SILVER



COD. **PO 23W**
PLATINO
PLATINUM



art. 090 128 PO 23B 07



art. 090 128 PO 23W 16



art. 090 96 PO 23B 07



art. 090 96 PO 23W 16



art. 090 32 PO 23B 07



art. 090 32 PO 23W 16



art. 090 35 PO 23B 07



art. 090 35 PO 23W 16



COD. 16
ARGENTO ANTICO
ANTIQUÉ SILVER



COD. PO 26B
PLATINO
PLATINUM



COD. 16
ARGENTO ANTICO
ANTIQUÉ SILVER



COD. PO 26W
PLATINO
PLATINUM



art. 090 128 PO 26B 16



art. 090 128 PO 26W 16



art. 090 96 PO 26B 16



art. 090 96 PO 26W 16



art. 090 32 PO 26B 16



art. 090 32 PO 26W 16



art. 090 35 PO 26B 16



art. 090 35 PO 26W 16

DECORI / DECORATIONS



COD. **PO 24**
BLU PROVENZALE / PROVENZAL BLUE
 ceramica bianca / white ceramic



COD. **PO 25**
ORO / GOLD
 ceramica nera / black ceramic



COD. **PO 23W**
PLATINO / PLATINUM
 ceramica bianca / white ceramic



COD. **PO 23B**
PLATINO / PLATINUM
 ceramica nera / black ceramic



COD. **PO 26W**
PLATINO / PLATINUM
 ceramica bianca / white ceramic



COD. **PO 26B**
PLATINO / PLATINUM
 ceramica nera / black ceramic



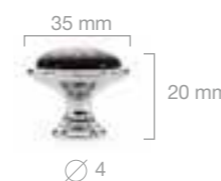
COD. **PO 28**
AVORIO / IVORY
 ceramica avorio / ivory ceramic



ART. 195 96 PO 18 19



ART. 195 96 PO 147 07



ART. 27 35 PO 147 07



art. 275 96 PO 03 12

Decoro - Decoration PO 03
 Maniglia in bronzo antico
 Handle in antique bronze finishing



ART. 195 96 PO 17 07



ART. 27 35 PO 17 07



art. CER 36 06





Art. 129 PO

Maniglia in metallo finitura cromo, personalizzata con placche in ceramica vari decori. Disponibile con interasse 96 e pomello coordinato.

Metal handle chrome finished, personalized ceramic plates with various decorations. Available with interax 96 mm and coordinated knob.

Modena collection



art. 129 96 PO 01 07
Decoro - Decoration PO 01



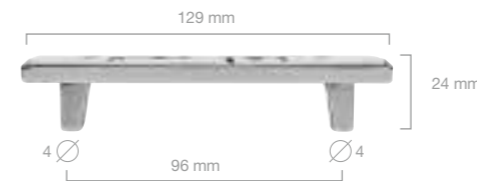
art. 129 96 PO 03 07
Decoro - Decoration PO 03



art. 361 00 PO 01 07
Decoro - Decoration PO 01
Maniglia in argento antico
Handle in ancient silver

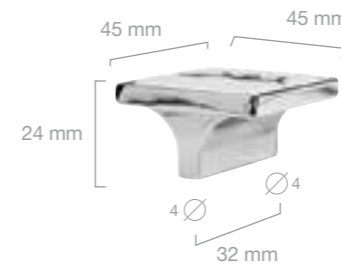
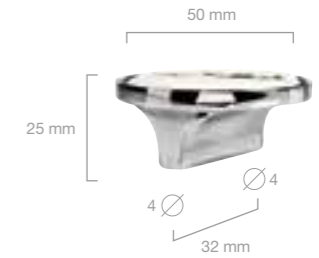


art. 361 00 PO 03 07
Decoro - Decoration PO 03



art. 138 96 PO 01 07
Decoro - Decoration PO 01
Maniglia finitura cromata
Handle with chromed finishing

art. 348 32 PO 01 07
Decoro - Decoration PO 01
Maniglia finitura cromata
Handle with chromed finishing



art. 326 32 PO 01 07
Decoro - Decoration PO 01
Maniglia finitura cromata
Handle with chromed finishing



madreperla

Nata come dono del mare, la madreperla con la sua luce unica è stata da sempre utilizzata per decorare con i suoi inaspettati riflessi cangianti tutti gli oggetti più preziosi.

Questa collezione di Ferretto Handles utilizza solamente vera madreperla naturale ottenuta dai migliori tipi di conchiglie. Nelle diverse gradazioni originali (Abalone, Bianca, Nera etc.) ogni pezzo, così come la natura solo sa fare, ha una sua luce unica e irripetibile.

Born as a gift from the sea, mother of pearl with unique light has always been used to decorate with its unexpected iridescent reflections all the most precious objects.

This collection of Ferretto Handles uses only real natural mother of pearl obtained from the best types of shells. In different original shades (Abalone, White, Black, etc..) each piece, as well as only nature can do, has a unique and unrepeatable light.



art. 138 96 MP 03 07

MP 03 - Abalone Oro
Golden Abalone



art. 138 96 MP 01 07

MP 01 - Paua naturale
Natural Paua



art. 138 96 MP 05 07

MP 05 - Abalone Bianco
White Abalone



art. 138 96 MP 02 07

MP 02 - Madreperla Nera
Black Mother of pearl



art. 138 96 MP 06 07

MP 06 - SKY



Art. 138 MP 07

Maniglia in metallo con finitura Cromo.
Intarsi in vera Madreperla naturale in vari colori.

Chrome finished metal handle
Inlays in genuine natural Mother of Pearl
in various colors.



madreperla



art. 511 42 MP 05 07
Chiave con Intarsio Madreperla
MP 05 Abalone bianco
Key with inlay Mother of pearl
MP 05 White Abalone



Art. 326 MP



Art. 320 MP



Art. 348 MP



art. 326 32 MP 02 07



art. 320 00 MP 02 07



art. 348 32 MP 02 19



art. 326 32 MP 03 07



art. 320 00 MP 03 07



art. 348 32 MP 03 19



art. 326 32 MP 01 07



art. 320 00 MP 01 07



art. 348 32 MP 01 07



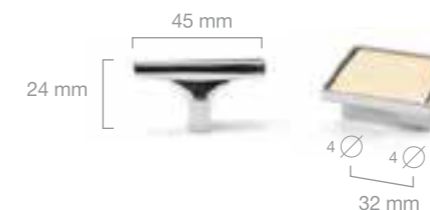
art. 326 32 MP 05 07



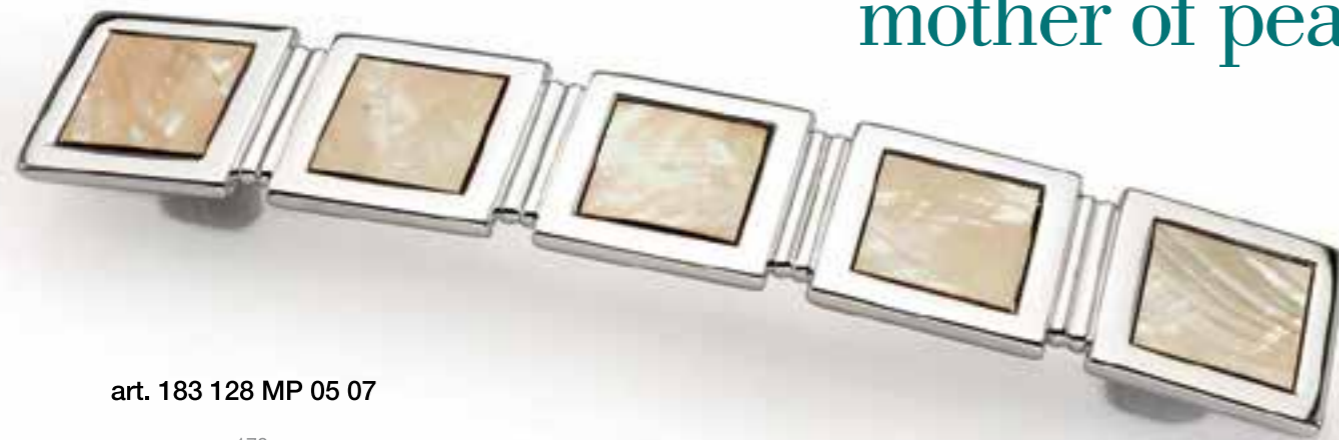
art. 320 00 MP 05 07



art. 348 32 MP 05 07



mother of pearl



art. 183 128 MP 05 07



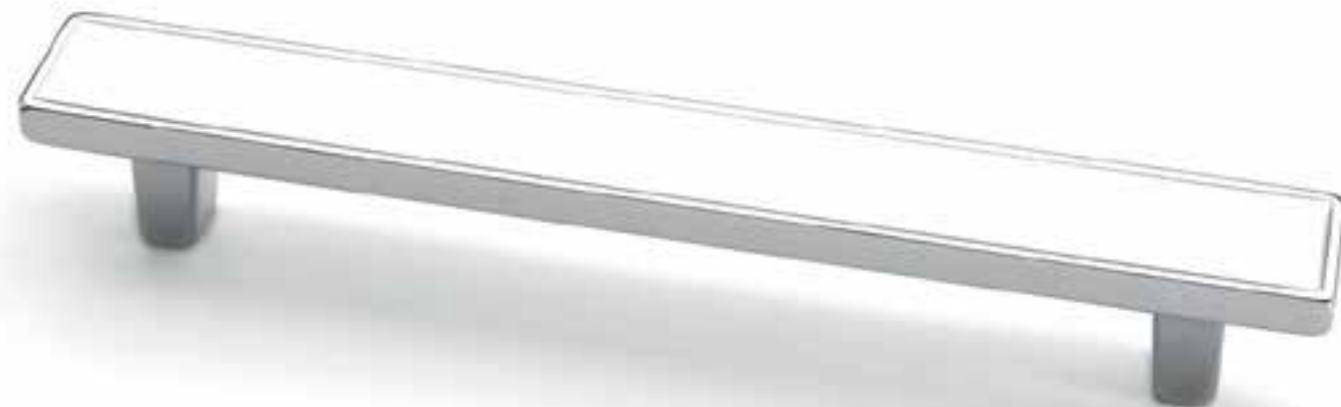
art. 320 00 MP 05 07



Coordinato di maniglia, pomello
e chiave con finitura Cromo.
Intarsio di vera Madreperla
05 - Abalone bianco

Set with handle, knob and key
Chrome finished.
Inlay in Mother of pearl
05 - White Abalone

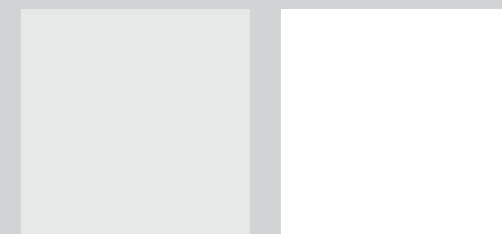
smalto



Art. 138 BI

Maniglie e pomello dalla linea pulita e moderna in metallo con finitura Cromo. Decoro in Smalto Bianco.

Chrome finished handle and knob with clean and modern lines. White enamel decoration.



art. 138 128 BI 07



art. 138 96 BI 07

art. 361 00 BI 07

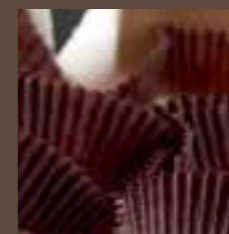




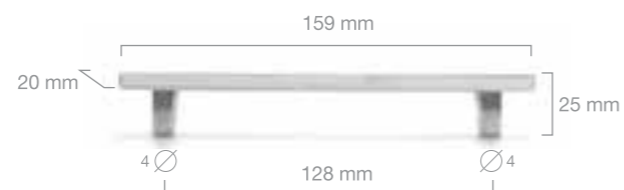
Art. 138 MA

Maniglie e pomello dalla linea pulita e moderna in metallo con finitura Cromo. Decoro in Smalto marron cioccolato.

Chrome finished handles and knob with clean and modern lines. Chocolate brown enamel decoration.



art. 138 128 MA 07



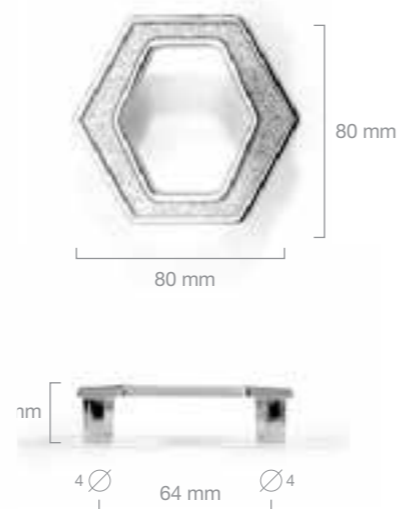
art. 138 96 MA 07



art. 361 00 MA 07



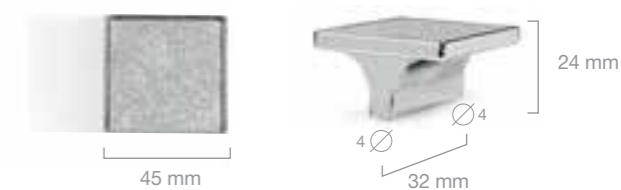
art. 150 64 PA 07



art. 348 32 PA 07



art. 326 32 PA 07





Serie di maniglie e pomelli dal design lineare, in metallo finitura Cromo. Decoro Glitter Argento.

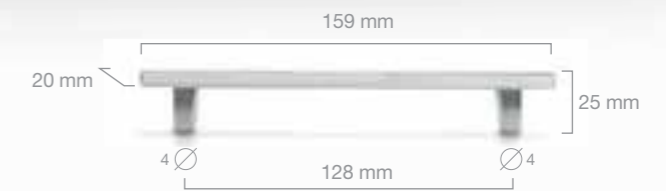
Set of handles and knobs with linear design, in Chrome finish metal. Decor Silver Glitter.



Art. 320 00 PA 07



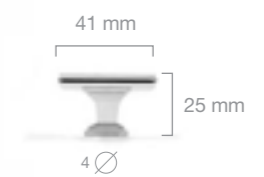
Art. 138 128 PA 07



Art. 138 96 PA 07



Art. 361 00 PA 07





Art. 160 PA ORO

Maniglia cromata dalla linea elegante e ricercata con decorazione in glitter oro o argento.

Refined and glamour chromed handle with gold glitter decoration.



art. 160 128 PA ORO 07



art. 160 96 PA ORO 07



glitter



art. 160 128 PA 07



art. 160 96 PA 07



Maniglia cromata dalla linea elegante e ricercata con decorazione in glitter argento.

Refined and glamour chromed handle with silver glitter decoration.

art. 160 PA





Un cristallo Swarovski può trasformare anche un solo raggio di luce in un riflesso sorprendente e meraviglioso. Una magia che solo gli oggetti più preziosi sanno donare. La perfezione delle finiture metalliche, oro, cromo o antiche, sanno creare il giusto equilibrio per esaltare al massimo la luce di questi eccezionali elementi.

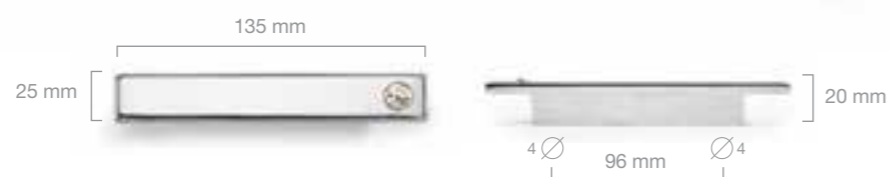
A Swarovski crystal can turn even a single ray of light in a amazing and wonderful reflection. A magic that only the most precious objects can give. The perfection of the metal finish - gold, chrome or antique - it's able to create the right balance for maximally improve the light of these extraordinary elements.

Crystals from Swarovski®

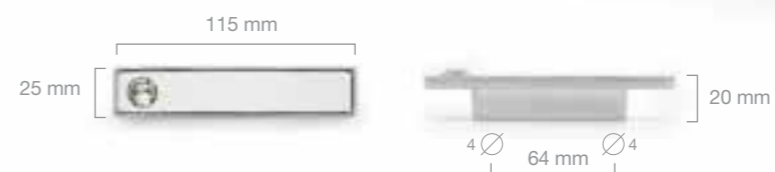




art. 188 96 SWA 07 dx/right



art. 188 64 SWA 07 sx/left



Art. 188 00 SWA 07 sx/left



Art. 188 SWA

Serie maniglie in metallo con finitura Oro lux e Cromo con cristallo Swarovski taglio brillante.

Series of metal handles with Gold lux and Chrome finishing. Swarovski crystal brilliant cut.



Questo articolo è disponibile per il lato sinistro e destro.
This item is available for left and right sides.







Crystals from Swarovski®



art. 357 70 SWA 19



art. 357 70 SWA 07



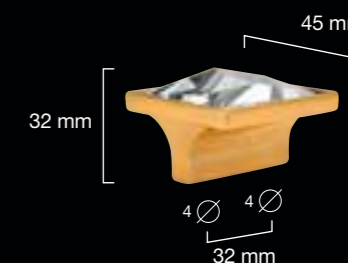
Crystals from Swarovski



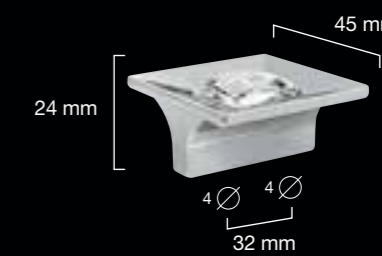
art. 326 32 SWA 16



art. 390 32 SWA 19



art. 326 32 SWA 07





Crystals from Swarovski®



art. 355 35 SWA 19



art. 355 35 SWA 07



art. 355 24 SWA 19



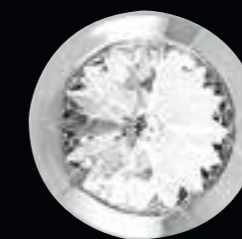
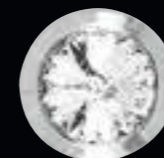
art. 355 24 SWA 07



art. 355 16 SWA 19



art. 355 16 SWA 07



Crystals from Swarovski®



art. 172 128 SWA 19



art. 172 128 SWA 19 DIA



art. 172 128 SWA 19 CO



art. 172 128 SWA 19 PET



Crystals from Swarovski



art. 172 128 SWA 07



art. 172 128 SWA 07 DIA



Art. 172 SWA

Serie maniglie in metallo con finiture Oro lux e Cromo con lavorazione metallica di diamantatura e incastonamento di cristalli Swarovski taglio Brillante. Disponibile in due misure con interasse 128 mm e 96 mm.

Metal handles serie with lux Gold and Chrome finishing with diamonded metalworking and setting of Swarovski crystals Brilliant cutted. Available in two sizes with an interax of 128 mm or 96 mm.

art. 172 96 SWA 07



art. 172 96 SWA 07 DIA



Crystals from Swarovski®

art. 132 96 SWA 19



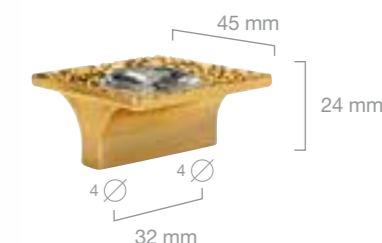

art. 132 64 SWA 19



art. 362 00 SWA 19



art. 326 32 SWA 19 CO

Art. 132 SWA

Serie di maniglie e pomoli in metallo con finitura Oro lux e incastonatura cristalli Swarovski con taglio quadrato.

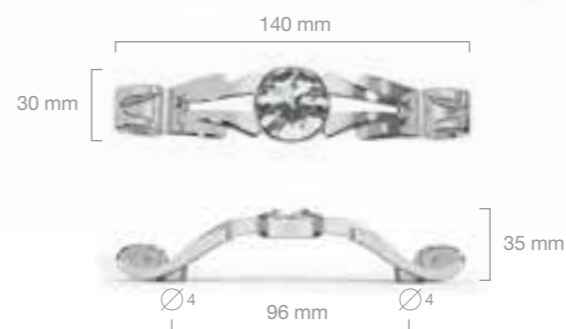
Series of metal handles and knobs with finishes Gold lux and embedding Swarovski crystals with square cut.



versione con finitura Bronzo antico
Antique Bronze finished version



jewel collection
vanessa diamond



art. 166 96 SWA 07



art. 166 96 SWA 16



art. 166 96 SWA 19



art. 195 96 SWA 07



Crystals from Swarovski®

art. 27 35 SWA 07



Crystals from Swarovski®



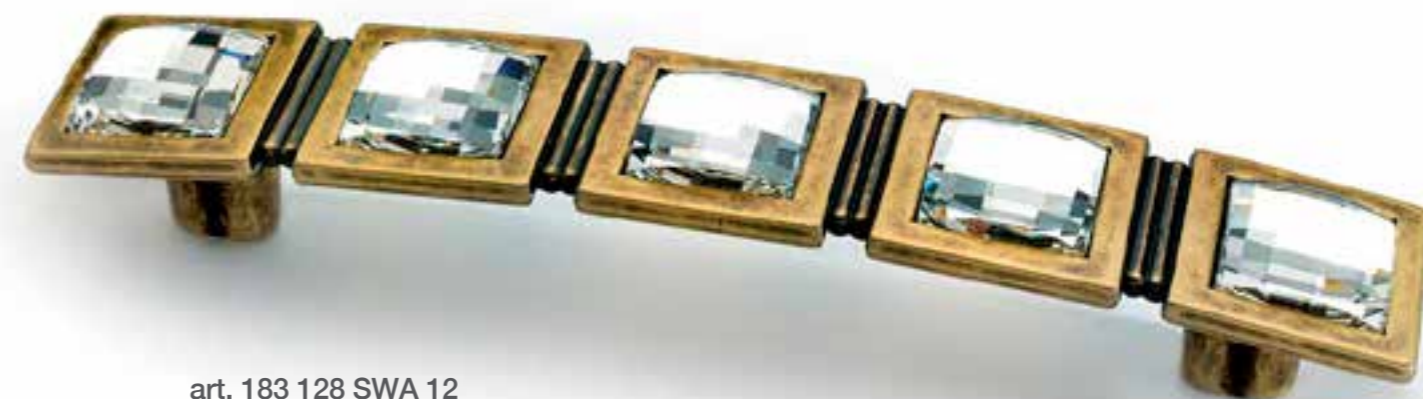
Serie di maniglie in metallo in varie finiture dalle linee ricercate ed eleganti con incastonatura di cristalli di Swarovski con taglio Brillante.

Series of metal handles in various finishes from refined and elegant lines. Setting of Swarovski crystals with brilliant cut.

art. 133 96 SWA 16



art. 133 64 SWA 07



art. 183 128 SWA 12



Serie di maniglie, pomolo e chiave in metallo con varie finiture. Incastonatura di cristalli di Swarovski con taglio quadrato.

Series of metal handles, knob and key with various finishes. Embedded Swarovski crystals with square cut.



art. 183 128 SWA 12



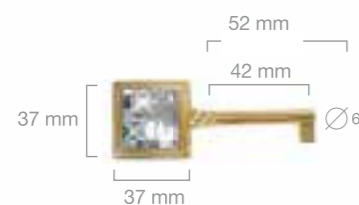
art. 183 128 SWA 07



art. 183 128 SWA 19



art. 511 42 SWA 19



art. 320 00 SWA 19



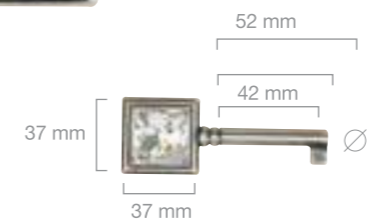
art. 127 96 SWA 16



art. 349 00 SWA 16



art. 511 42 SWA 16



art. 608 10 SWA 16



art. 193 128 SWA 07



art. 375 36 SWA 07



art. 375 46 SWA 07



art. 193 128 SWA 19



art. 375 46 SWA 19



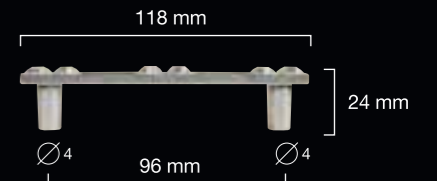
art. 375 36 SWA 19



art. 134 96 SWA 12



art. 134 96 SWA 16



art. 319 30 SWA 16



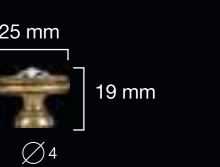
art. 319 30 SWA 12



art. 319 25 SWA 16



art. 319 25 SWA 12



Collezione di maniglie pomoli con incastonatura cristalli di Swarovski. Articoli in metallo con finiture anticate, disponibili in vari tipi di finitura.

Collection of handles knobs with embedding Swarovski crystals. Metal articles with antiqued finishes, available in various types of finishing.



art. 129 96 SWA 19

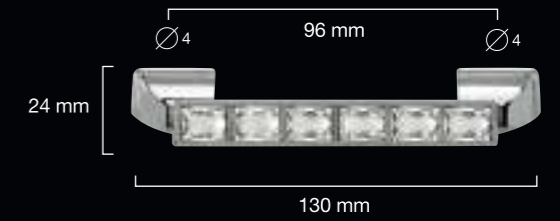


art. 129 64 SWA 19

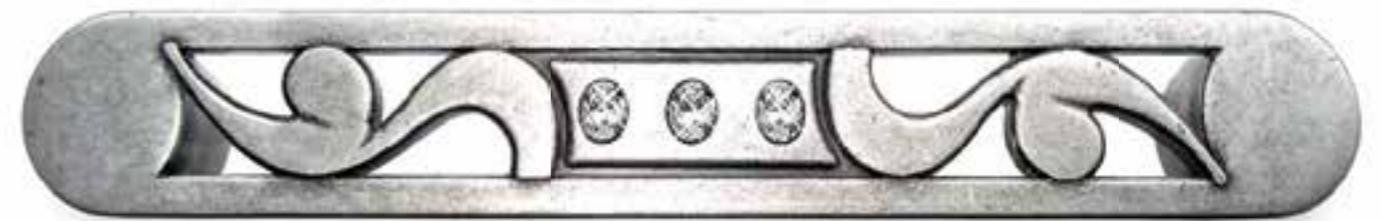


Crystals from Swarovski®

art. 139 96 SWA 07



art. 178 160 SWA 16



art. 178 128 SWA 07



Crystals from Swarovski®



ART. 215 128 SWA P1 19 sx/left



ART.215 128 SWA 07 dx/right



ART. 375 46 SWAP1 19



ART. 375 46 SWA 07



ART. 375 36 SWAP1 19



ART. 375 36 SWA 07





art. 304 SWA 16



art. 216 64 SWA 16 sx/left



ART. 216 96 SWA 16 dx/right

Crystals from Swarovski®

art. 216 96 SWA12 dx



art. 304 SWA 12



01 31 mm
02 24 mm



art. 216 64 SWA12 sx



Crystals from Swarovski®



PRESTIGE
aurora



art. 099 128 SWA 07



art. 099 128 SWA 19



art. 099 128 SWA 16



Crystals from Swarovski ®



art. 399 38 SWA 07

Linea di maniglie e pomelli metallici presentati in diverse finiture. Crystals from Swarovski ®

Handles and knobs set different finishings Crystals from Swarovski ®



art. 399 38 SWA 19



art. 399 38 SWA 16





080 96 SWA 19



382 30 SWA 19



art. 140 96 SWA 12



Code	interasse hole to hole	lunghezza length mm	altezza height mm	larghezza depth mm	diametro diameter mm
080 96 SWA	96	130	35	45	
382 30 SWA			25		30

Crystals from Swarovski®

Crystals from Swarovski®



bull eye

Pomelli in metallo con finiture Cromo, Oro lux e Nikel satinato con Cristallo Swarovski

Metal knobs in Chrome, Gold lux and Satin Nickel finishings with Swarovski crystal.



art. 376 30 SWA 29



art. 376 30 SWA 19



art. 376 30 SWA 07



jewel



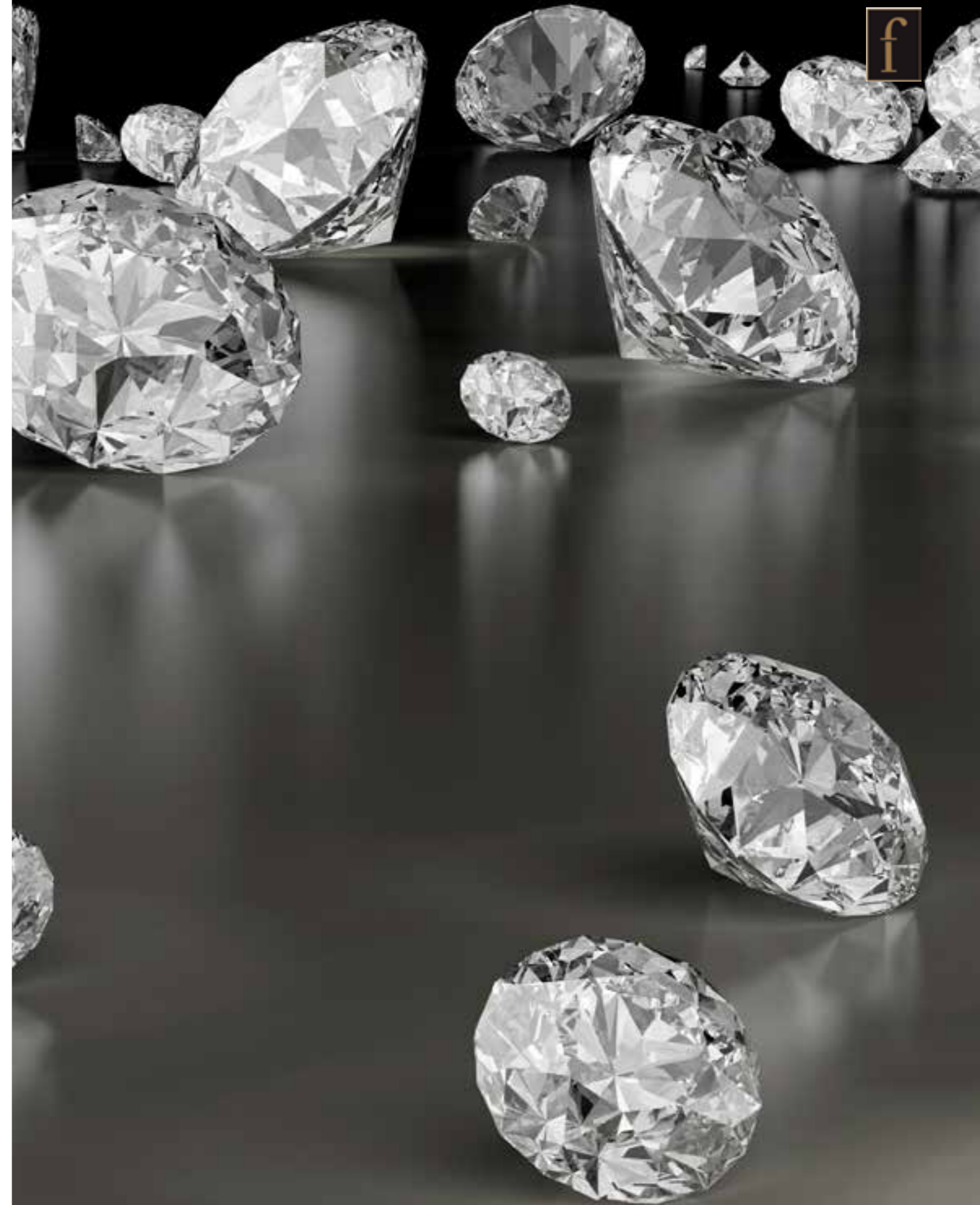
Ancora nuovi, preziosi modelli per la collezione più ammirata delle nostre maniglie-gioiello. Spazio al cristallo, che dona luce alle nostre perfette finiture Lux.

New precious models for the most admired Jewel-Handle collection. Space to crystal, which gives light to our perfect lux finishings.



art. 07 01 30 07

crystals





Operazione di finitura della superficie degli oggetti metallici. Si effettua mediante un utensile rotante caricato con un diamante. Con questo procedimento si ottiene un tappeto di punteggiatura sulla superficie della maniglia con una luce di riflesso unica.

A superficial finishing operation of metal objects. It can be effected by means of a rotary tool loaded with a diamond.

Through this process you can get a dotting caret on the surface of the handle with an unique reflection light.



diamantato
diamonded



pettinato
brushed



cocodrillo
crocodile



majesty



ART. 197 192 DIA 15



disponibile in varie finiture
available in various finishings



diamantato
diamonded



art. 130 96 DIA 19 sx./left



art. 130 96 DIA 19 dx./right



art. 130 96 DIA 08 sx./left



art. 130 96 DIA 08 dx./right



art. 130 96 DIA 15 sx./left

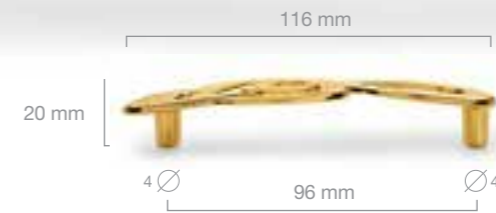
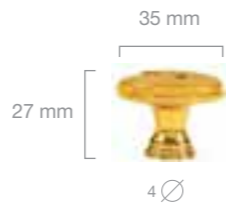


art. 130 96 DIA 15 dx./right





diamantato
diamonded



art. 145 96 DIA 19 sx/left



art. 145 96 DIA 19 dx/right



art. 145 96 DIA 15 sx/left



art. 145 96 DIA 15 dx/right



art. 347 00 DIA 19



art. 347 00 DIA 15



art. 399 38 DIA SWA 19



art. 099 128 DIA SWA 19



art. 388 38 DIA 19



art. 098 128 DIA 19



art. 377 36 DIA 19



art. 117 96 DIA 19

linee diamantatura
diamonded lines



art. 194 128 DIA 19



art. 194 128 PET 19



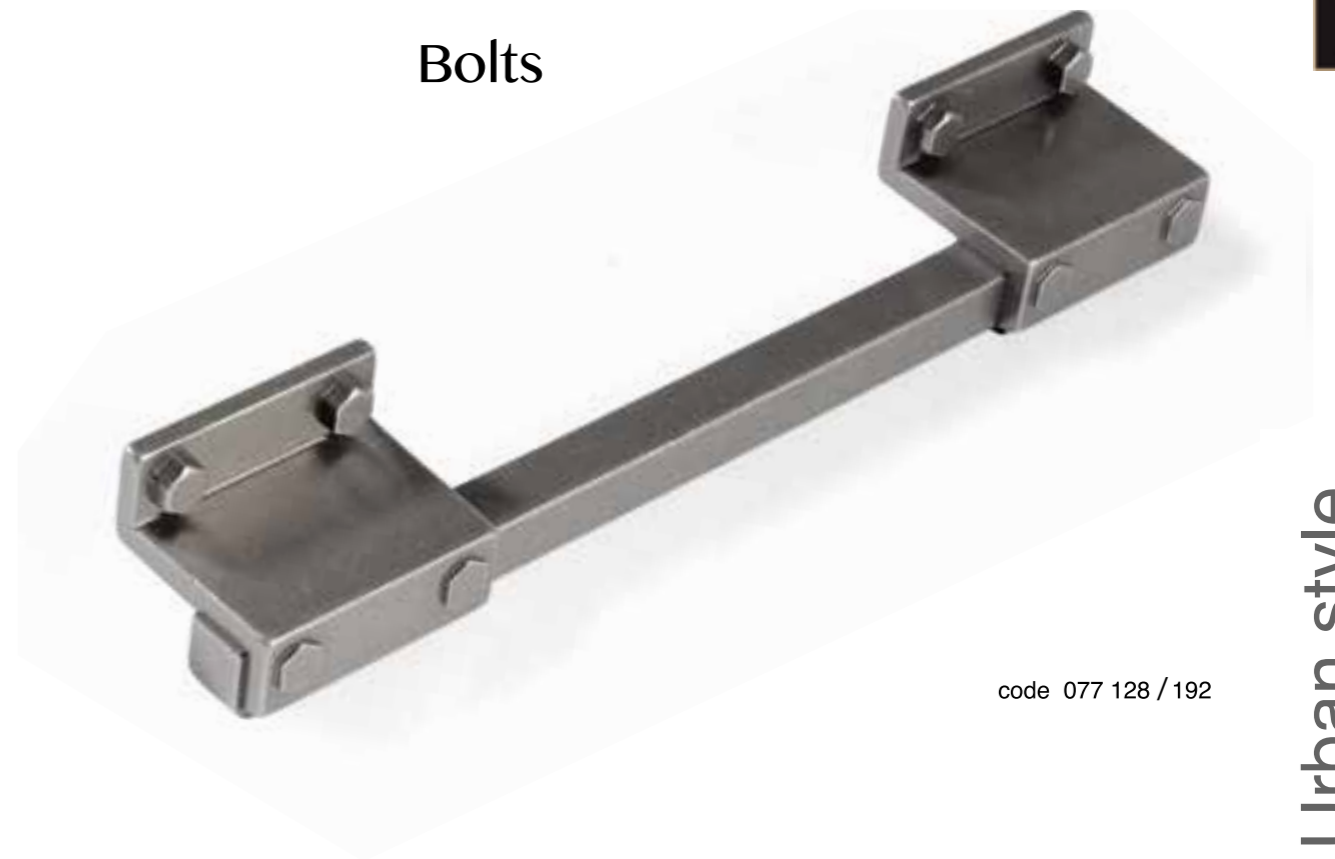
art. 194 128 CO 19

f



f

Bolts



code 077 128 / 192

Urban style





Urban style



code 078 128/160



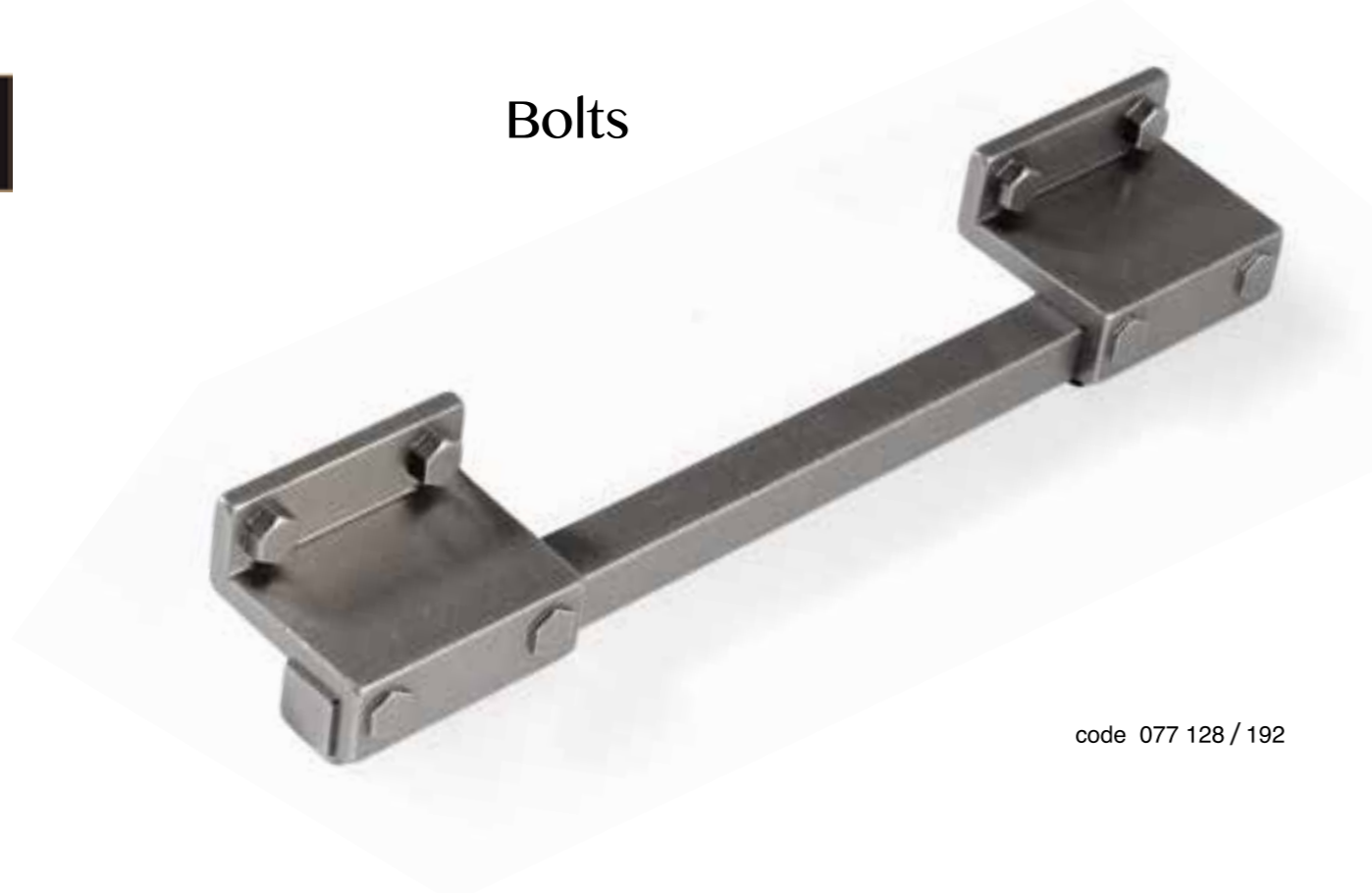
code 358

Code	hole to hole interasse mm	length lunghezza mm	height altezza mm	depth larghezza mm	diameter diametro mm
078 128-160	128-160	185	30	25	
358		25	27		25





Bolts



code 077 128 / 192



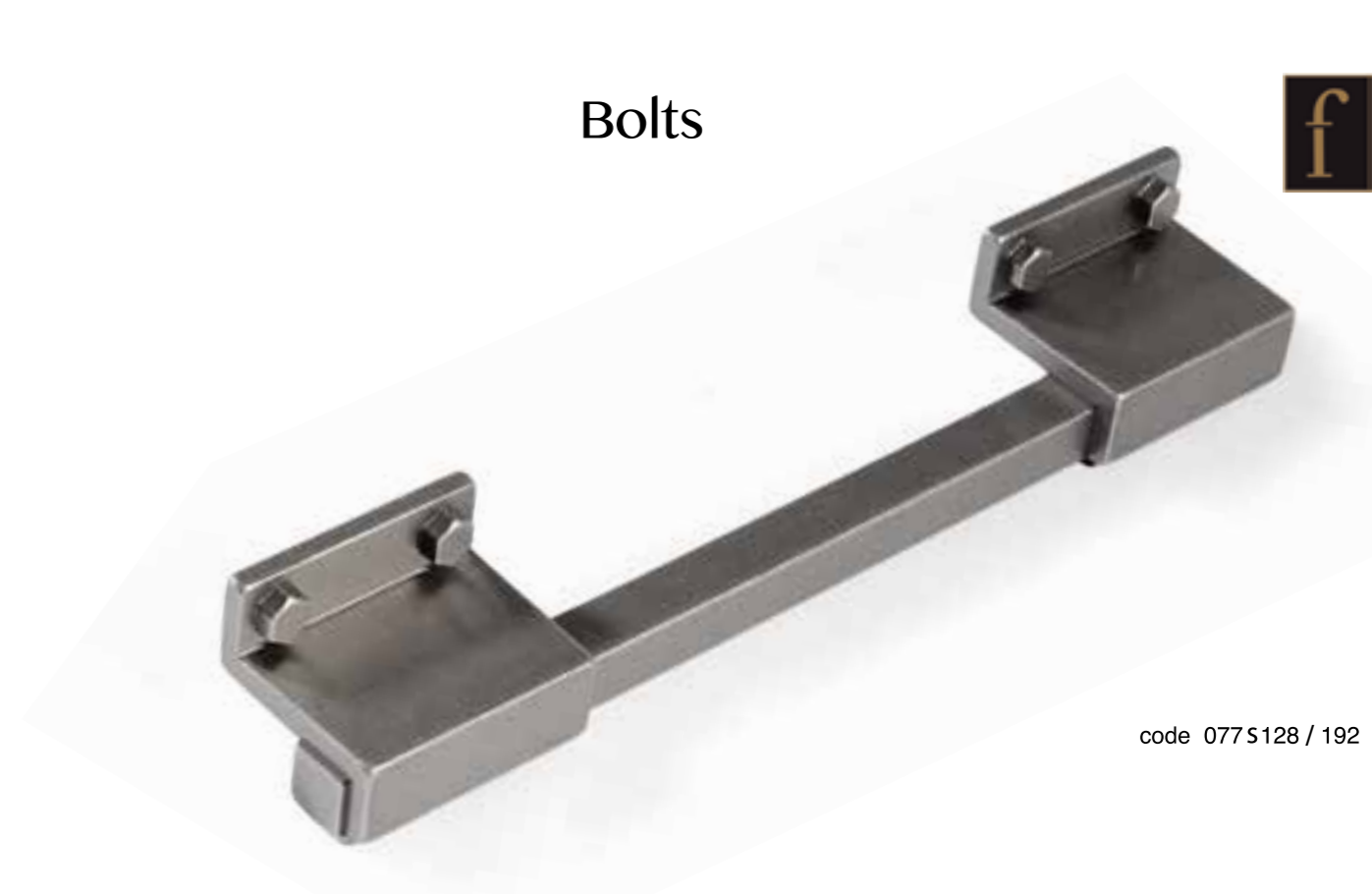
code 384 32



Code	hole to hole interasse mm	length lunghezza mm	height altezza mm	depth larghezza mm
077	128-192	205	35	28
384 32	32	46	35	28



Bolts



code 077S128 / 192



code 384 S 32



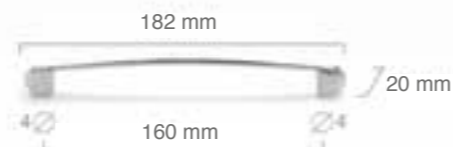
Code	hole to hole interasse mm	length lunghezza mm	height altezza mm	depth larghezza mm
077 S	128 -192	205	35	28
384 S 32	32	46	35	28



art. KT 010 224 07



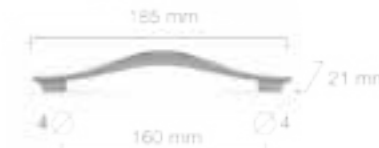
art. KT 010 160 07



art. KT 003 160 29



art. KT 003 160 07



art. KT 005 160 07



art. KT 005 160 29



code	hole to hole interasse mm	length lunghezza mm	height altezza mm	depth larghezza mm
BU 002 320	320	360	24	16
BU 002 224	224	260	24	16
BU 002 160	160	190	24	16
BU 002 96	96	130	24	16



code	hole to hole interasse mm	length lunghezza mm	height altezza mm	depth larghezza mm
BU 010 320	320	340	36	12
BU 010 224	224	250	36	12
BU 010 192	192	220	36	12
BU 010 160	160	180	36	12



code	hole to hole interasse mm	length lunghezza mm	height altezza mm	depth larghezza mm
BU 004 320	320	350	35	18
BU 004 224	224	250	35	16
BU 004 160	160	190	35	16



code	hole to hole interasse mm	length lunghezza mm	height altezza mm	depth larghezza mm
BU 005 224	224	300	35	16
BU 005 160	160	240	35	16
BU 005 96	96	170	35	16



art. 858 160 24



art. 908 35 24



The metal is decidedly our natural element. We know perfectly the matter that we have learned to work and turn in a unique, special object.

With the exception of art castings in silver - pewter or brass all our production is exclusively made of Zamak, a zinc alloy combined with small amounts of aluminum, magnesium and copper.

The processing is done for pressure die, the most popular method of processing of this alloy for the realization of accessories and components. Zamak hot-forming allows to obtain extremely accurate parts with complex shapes ensuring an excellent quality. Durability, hardness and ductility make zamak an extremely versatile material, perfectly suitable for surface finishing (machining, diamonded process, metal polishing, galvanic treatments, etc.).

Ferretto Handles runs the entire manufacturing process from the design and construction of molds, pressing hot runner, metal cleaning and polishing, galvanized finishes such as chrome, nickel and copper, and special paint finishes and antiquing processes entirely hand made.



cromo
chrome



art 357 35 07





art 186 96 07 sx/left



art 186 96 07 dx/right

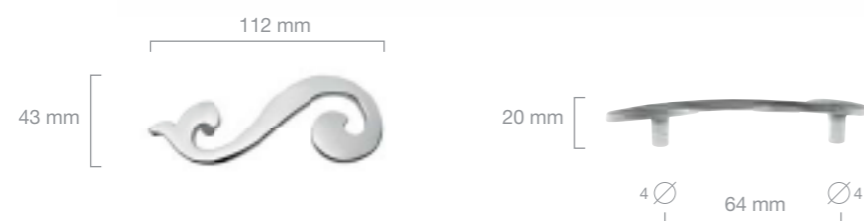
cromo
chrome



art 186 64 07 sx/left



art 186 64 07 dx/right



Maniglie con linee Decò floreale in Oro lux oppure Cromo. Disponibili in due misure con interasse 96 o 64 mm nelle versioni destra e sinistra. E' possibile montarle sul mobile sia in orizzontale che in verticale.

Handles with Deco floral lines, finished gold lux or Chrome. Available in two sizes with interax 96 or 64 mm, in right and left side. Handles can be applied on the furniture either horizontally or vertically.



pearl nickel



art 289 96

satinato
satin

Una maniglia di puro design valorizzata dalla finitura satinata che le dona una luce soffusa e morbida. Un complemento unico abbinabile a molti stili moderni e contemporanei d'arredo.

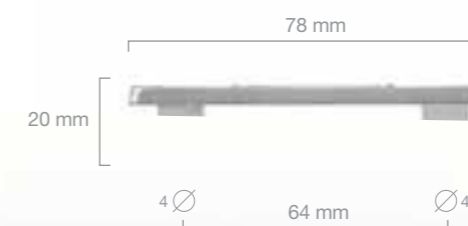
A handle of pure design enhanced by a satin finish that gives it a suffused light and soft. A unique complement combined with many modern and contemporary styles of furniture.



satin nickel



art 149 64 29



finiture speciali



La perfetta lavorazione della superficie metallica ci consente di ottenere la massima resa delle verniciature e delle finiture con bagno galvanico. Ma il nostro valore aggiunto è la cura con cui operiamo le lavorazioni a mano, pulendo e lucidando i metalli, preparandone le superfici con lavorazioni di burattatura, spazzolatura e smerigliatura e completandoli con una vasta gamma di finiture esclusive per qualità e per varietà eseguite con arte dai nostri artigiani.

La perfetta conoscenza di tutte le tecniche di finitura ci consente inoltre di continuare a proporre di nuove per soddisfare richieste sempre più personalizzate e stilisticamente innovative. Di seguito troverete infatti una piccola galleria di finiture nuove e originali che Ferretto Handles rende disponibile per qualsiasi dei suoi prodotti.

Il nostro staff, con la sua esperienza, è inoltre sempre disponibile per i clienti e gli operatori che ricercano lavorazioni e finiture totalmente personalizzate per abbinamenti speciali.



special finishes

A perfect processing of the metal surface allows us to obtain the maximum yield of coatings and finishes with galvanic bath. But our added value is the care with we perform processes by hand, cleaning and polishing metals, preparing the surfaces with processing of tumbling, brushing and grinding and supplementing them with a wide range of exclusive finishes for quality and variety made with art by our craftsmen.

The perfect knowledge of all finishing techniques also allows us to continue to propose new applications to satisfy any personalized and stylistically innovative request. Below you will find it a little gallery of new and original finishes by Ferretto Handles, available for any of its products.

Our Staff, with his experience, it is also always available for customers and operators who are looking for processes and finishes fully customized for special combinations.



Antica Fiesole

old Fiesole



art 194 128 26



disponibile interasse 32 64 128 - available with interax 32 64 128

Osso antico

Old Bone



art 169 96 25



art 171 96 25

Avorio Regale

Royal Ivory



art 136 01 20



art 165 96 20



Finitura / Finishing 39

Oro Verona

Verona Gold



Finitura / Finishing 40

Oro Fiorentino

Florentine Gold

jasmine



art. 098 128 12



art. 098 128 16



art. 098 128 25



art. 388 38 12



art. 388 38 16



art. 388 38 25

Maniglia e pomello con linee morbide e rotonde. In varie finiture

Handle and knob with soft and circular lines. Presented in different finishings.



bronzo
bronze



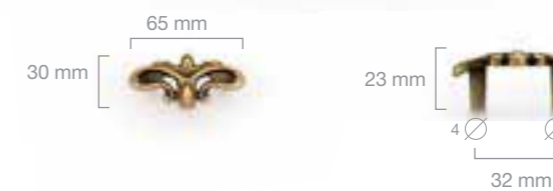
art 194 128 12



art 194 64 12



art 194 32 12



La morbida luce calda del Bronzo è esaltata nelle nostre maniglie dalla perfezione delle tinte e dalla qualità delle lavorazioni sulla superficie metallica.

The soft, warm glow of the Bronze is exalted in our handles from the perfection of the colors and the quality of processing on the metal surface.

art. 169 160 16



art 371 00 16



art 169 96 12



art 169 160 16



art 371 00 12



art 169 96 16



Shungite



code 079 160



code 385 35



Code	hole to hole interasse mm	length lunghezza mm	height altezza mm	depth larghezza mm	diametro mm
079 160	160	190	30	18	
385 35			26		35





art 375 36 12



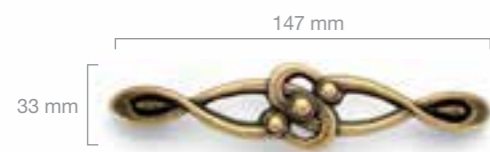
36 mm



art 375 46 12



art 193 128 12

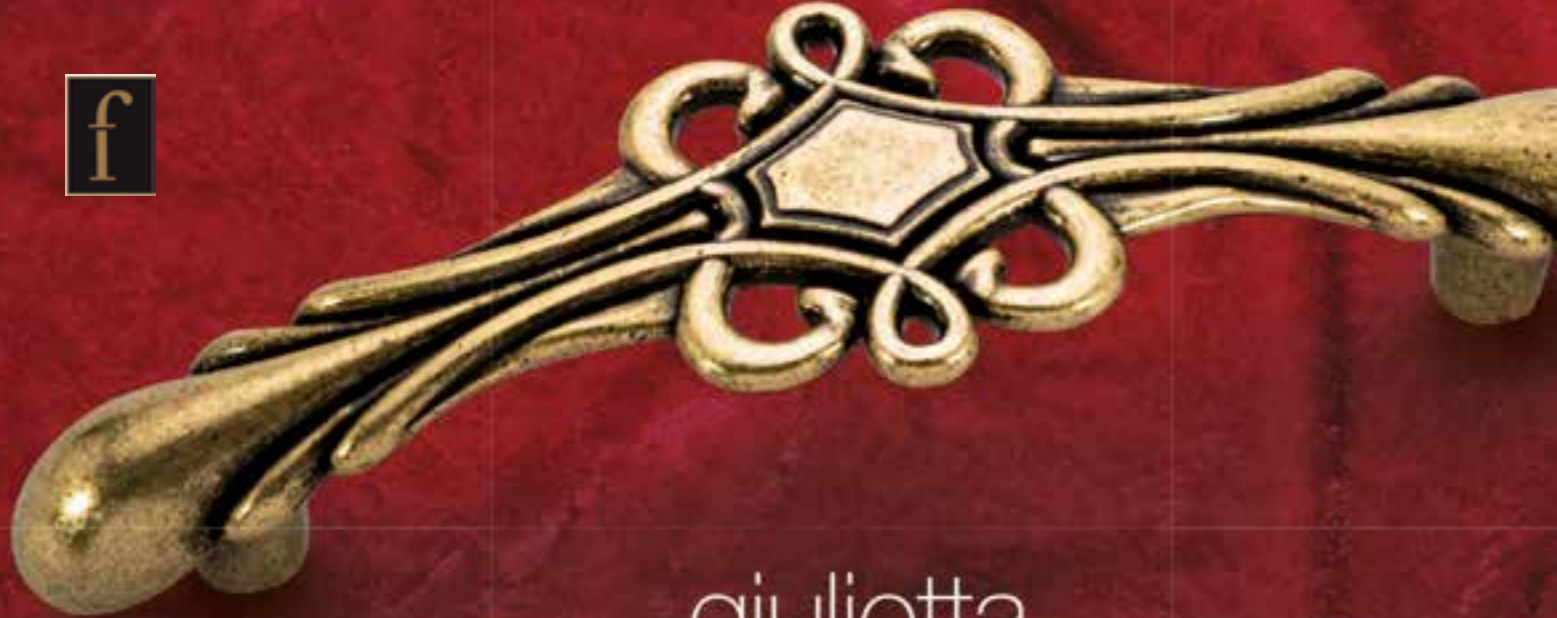


art 127 128 04



art 127 96 04





giulietta



art.117 96 12



art.117 96 16



art.117 96 25



art. 377 36 12



art. 377 36 16



art. 377 36 25

Maniglia e pomello con linee floreali importanti. Presenta in varie finiture.

Handle and knob with important floreal lines. Presented in different finishings



art 161 96 16



art 372 00 16



bronzo&argento antico
bronze&old silver

art 161 96 12



art 372 00 12



art 160 128 16



art 160 96 12





art 172 128 12



art 133 96 12



art 133 64 12



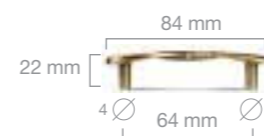
art 172 96 12



art 151 96 12



art 172 160 12



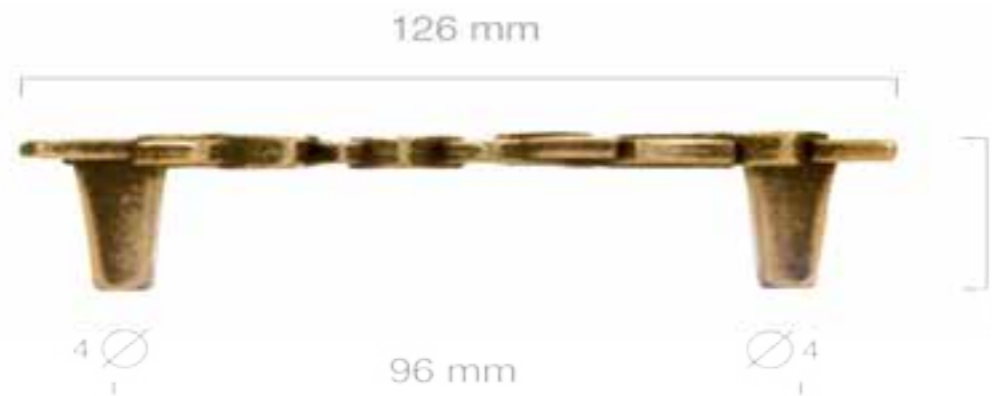
art 151 64 12



art 165 96 16



art 165 96 12



28 mm

96 mm



art 174 96 / 128 16



art 174 96 / 128 12



art 167 64 16



art 167 64 12





art 153 128 12



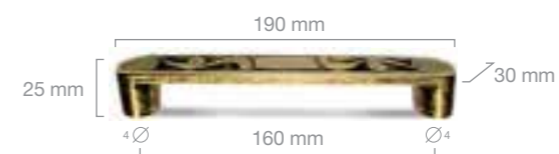
art 153 96 12



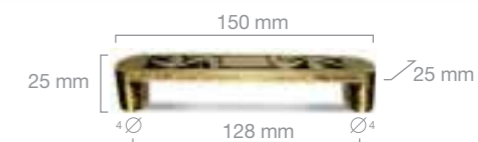
art 363 16 12



art 178 160 12



art 178 128 12



art 183 128 12



art 183 128 16



art 145 128 12 sx/left



art 145 128 12 dx/right



art 145 96 16 sx/left



art 145 96 16 dx/right



art 130 96 12 sx/left



art 130 96 12 dx/right



art 130 96 16 sx/left



art 130 96 16 dx/right



art 173 128 12



art 370 00 12



art 171 96 12



art 171 96 16



art 166 96 12

art 164 96 12



art 166 96 16



art 164 96 16



art 170 96 12



art 170 96 16



art 168 96 12



art 168 96 16



art. 176 128 16



art 176 96 16



art 176 32 16



art 141 96 16 sx/left



art 141 96 16 dx/right



art 141 32 12 sx/left



art 141 32 12 dx/right





art 215 128 16 sx / left



art 215 128 16 dx / right



ART. 375 46 16



art 375 36 16





art 154 128 MO 07



art 154 128 MO 19



Universal for the relief and cure of Hernia or Rupture
POMEROY & CO., 144 Broadway, New York.

SKATES.

Discount to Clubs. Send for Illustrated Catalogue
J. P. MARSTEAD, 56 Court St., Brooklyn, N.Y.

RUPTURE CURED.—Trusses injure, increase the pain, and make it a life torment; while Dr. Sherman's Appliances, used according to printed instructions, cure. Prices from \$10 upward. Send 10 cents for photographical likeness of cases before and after cure, and price-list. Office 691 Broadway.

CHENEY BROS'
American Gros-Grain S
IN BLACK STRIPES,
AND ELEGANT FALL COLO
Of Shades especially adapted for fielding



\$72.00 EACH WEEK.—Agents
Business strictly legitimate. Particulars from
J. WORTH, St. Louis

BOOK AGENTS, and other Canvasers
work, can learn how to increase t
come \$18 a week (more), without int
with their regular Canvasing by s
F. N. REED, 139 Eighth St.,

BIG MONEY! AGENTS' outfit free
\$325 A MONTH and expenses to good C
ers. Samples free. Address
H. G. DEAN, New Bedford,

\$5 to \$20 per day! Amusement all kinds of var
ple, of all ages, young or old, walk a more
work for us in your spare moments or all the time than of
us. Particulars free. Address: S. Gilman & Co., Portland,

\$475 A MONTH to good canvassers—
new and as staple as flour. Samp
C. M. LININGTON, Ch.

THE TRADE WAGON



A WAGON INTENDED FOR GENERAL PURPOSES
WEIGHS BUT 400 POUNDS
Is finished ready to paint and trim. Inquire
carriage-maker, or the only manufacturer
S. N. BROWN & CO., of Dayton,

to get samples Free.

HEAT, wherewith secret com-
pany be carried on without fear of
e although provided with one of
higher it. Nothing like it has ever
ple and reliable, and can be used by
see Alex. Larnes, Agent, Box 5196,
ill be sent free by mail to any address
in. Liberal discount to the Trade.

MADE THIS BAG OF MONEY in
49 days canvassing for Amers-
can Homes, with Oil Chro-

WINDOW CURTAINS,



atches & Jewelry.

THOMPSON,
DEALER IN
atches, Clocks, Jewelry,
er Wars, Gold Pens, Spectacles,
at for American Watches and
Best Thomas Clocks,
14 WASHINGTON AVENUE.
atches, Clocks and Jewelry repaired in
best manner and warranted. GOLD AND
VER PLATING DONE. aug20

VANDER HORCK,

DEALER IN
STOVES,

Tin and Hardware,
37 FIRST STREET,
MINNEAPOLIS, MINN.

Agent for the Celebrated Cooking
Stove.

MR COMFORT & HOME COMFORTER.

Durable, Convenient, and Best Looking
Move in the World! Also, exclusive
Dealer in

PURE TURKISH—Trusses injure, increase the
pain, and make it a life torment; while Dr. Sher-
man's Appliances, used according to printed instruc-
tions, cure. Prices from \$10 upward. Send 10 cents for
photographical likeness of cases before and
after, and price-list. Office 691 Broadway, N. Y.



CASH PAID

FOR
Cigarettes, Decals, Pamphlets, Bags, Ropes and
Copper Wire, Lead, Zinc, Pewter, Type Me-
chanical Plates, Stereotype Plates, Tin Fall, Tin
and Old Metal of every description.
Orders & Mail promptly attended to
and to any part of the City or suburbs.

STOCKWELL,
25 Ann Street, N. Y.

HENRY CAPT,

OF GENEVA,
Now has a beautiful assortment of Watches and
Traveling Clocks, of his own make, at
No. 23 Union Square, New York.
K. LOUPPE, Agent.

WEBER

66 & 68 Park Place N.Y.
Bole Agents for Eastern States



UNDERTAK
AND DEALERS IN METAL
METAL AND WOOD

COFFINS AND
AND FURNITURE
Funerals carefully and properly
Cabinet Work and Repainting
No 21 Washington Avenue.

DAY BOOK

Journals & L

Manufactured in
Tribune Bl

ORTON BROT

EGYPTIAN CAR

AND



SOUTH AMER

CIRC

DEN ORTON
H. ORTON
MILES ORTON Equit
J. B. GAYLORD

JAPANESE PAPER
In great demand. A complete
Chamber Pails, Tin Jars, Spittoons,
Fruit Dishes, Trays, &c. Durable

NEW ENGLA
CONSERVA

The Largest Music School
Teaching Music, with instrumental accom-
pany. 125 hours of musical instruction, in
French and Italian, including piano, violin,
viola, cello, and double bass. Also
FREE. For particulars, send for
K. LOUPPE, Agent.

WEBER

WEBER

WEBER



art 182 128 16



art 182 128 12

Bronzo antico; Antique bronze



art 182 128 08

Rame sfumato; Shaded copper



art 182 128 11

Nero sfumato; Shaded black



art 132 128 12



art 132 96 12



art 132 64 12



art 362 00 12





art 131 96 16



art 131 64 16

art 131 32 16



art 286 96 01



art 286 64 01



art 272 96 12



art 272 64 12



art 135 96 16



art 135 96 C0 12



art 296 00 12



art 155 96 12



art 155 96 16



art 350 16 12



art 350 128 12



art 350 64 12



art 291 96 12

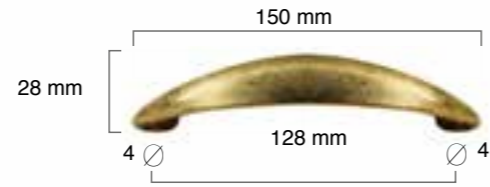


art 291 64 12





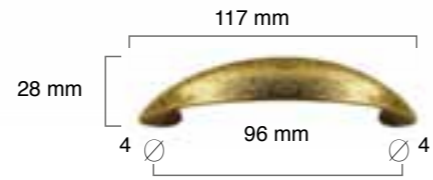
art. 144 128 12



art 292 128 12



art. 144 96 12



art 292 96 12



art. 271 96 12



art 292 64 12



art. 275 96



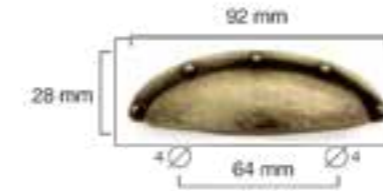
art 282 64 12



C / Filetto With Tread
C / Filetto With Hole

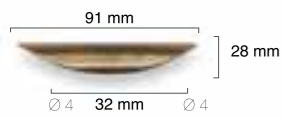


art. 122 96

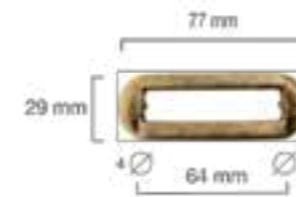


art 232 64 12

art. 122 32



art 294 64 12



art. 122 00





C / Filetto With Tread
C / Filetto With Hole

art 283 96 12



art 290



art 283 64 12



art 284 64 12



art 284 32 12



art 112 48 12

Misure - Overall size: 78 x 51 mm Interasse - hole to hole 48 mm





art. 283 96 MO 12



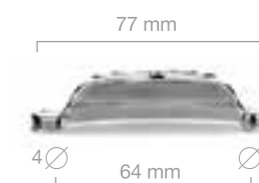
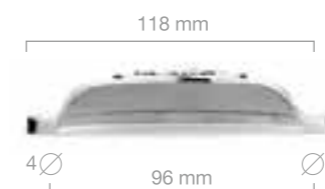
art. 283 64 MO 12



art. 283 96 MO BL 07



art. 283 64 MO BL 07





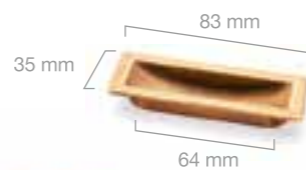
art. 152 96 10



art. 152 64 10



profondità incasso
built in depth
12 mm



profondità incasso
built in depth
10 mm



art 113 01 01

dimensioni esterne
external sizes



profondità incasso
built in depth
11 mm

dimensioni esterne
external sizes



profondità incasso
built in depth 10 mm



art 113 02 01

dimensioni esterne
external sizes



profondità incasso / built-in depth

art 113 75 10

art. 114 02



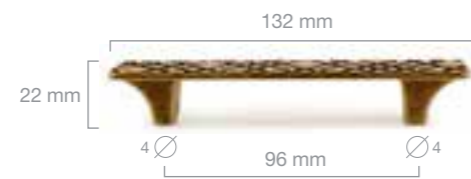
dimensioni esterne
external sizes



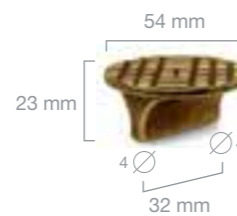
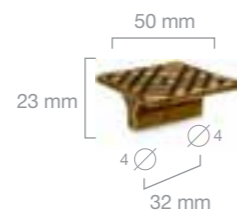
profondità incasso
built in depth 10 mm



art 157 96 12



art 365 32 12



art 364 32 12

art 104 96 12



art 326 32 16



art 326 32 12



art 130 96 16 sx/left



art 130 96 16 dx/right



hole to hole 96 mm
inerasse 96 mm



art 531 46 16



art 698 10 16



art 347 00 16





art 118 96 04



art 118 64 04

art 610 10 04



art 419 00 04



art 505 46 04

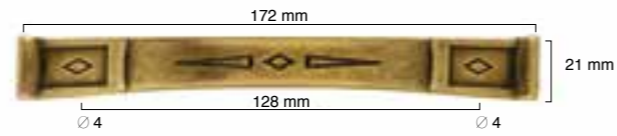


art 349 00 04

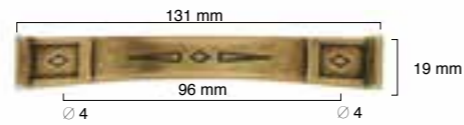




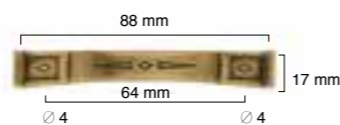
art 128 128 12
hole to hole 128 mm
interasse 128 mm



art 128 96 12
hole to hole 96 mm
interasse 96 mm



art 128 64 12
hole to hole 64 mm
interasse 64 mm



art 611 10 12



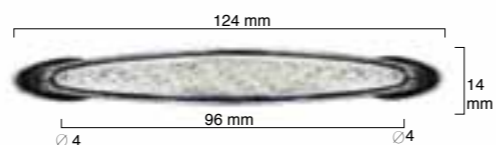
art 320 00 12



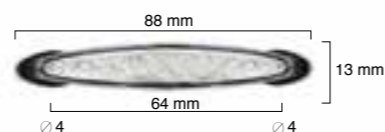
art 511 42 12



art 272 96 05
hole to hole 96 mm
interasse 96 mm



art 272 64 05
hole to hole 64 mm
interasse 64 mm



art 513 46 05



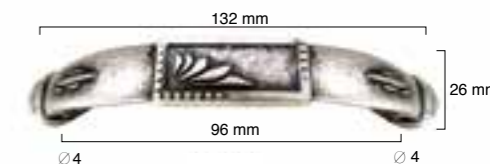
art 695 10 05



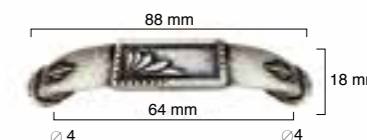
art.330 29 05



art 129 96 16
hole to hole 96 mm
interasse 96 mm



art 129 64 16
hole to hole 64 mm
interasse 64 mm



art 325 00 16

fusioni artistiche artistic melting

Una collezione di maniglie pregiate in fusione artistica, cesellate ed incise a mano come vuole la tradizione artigiana, prodotte utilizzando metalli nobili quali Argento, Peltro, Ottone e Bronzo.

Materiali facili da lavorare che si caratterizzano per resistenza, durezza, flessibilità ed inossidabilità nel tempo.

Dalla fusione di questi metalli nascono leghe dure ma allo stesso tempo malleabili, con un basso punto di fusione.

Una tradizione che rientra nelle cosiddette "arti minori", meno note e appariscenti, ma che trovano un largo impiego soprattutto negli oggetti d'arte applicata con speciale vocazione estetica.

L'arte è nata con l'artigianato, dall'abilità di chi sa ricavare dalle materie prime delle vere e proprie opere d'arte.

A collection of fine handcrafted handles in artistic melting, hand-chiseled and engraved to recall the handicraft tradition, made using noble metals such Silver, Pewter, Brass and Bronze. Materials which are easy to be processed and are characterized by resistance, hardness, flexibility and stainlessness over time. From the melting of these metals results metallic alloys tough and malleable with a low melting point.

A tradition that falls within the so-called "minor arts", less known and flashy, but widely used especially in works of applied art with a special aesthetics vocation. Art was born with the craftsmanship, the skill of whom is able to draw from the raw matter a real artwork.





art. 907 36 27

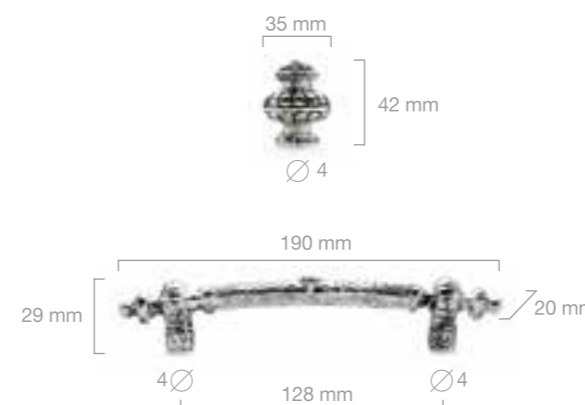
art. 857 128 27



Michelangelo



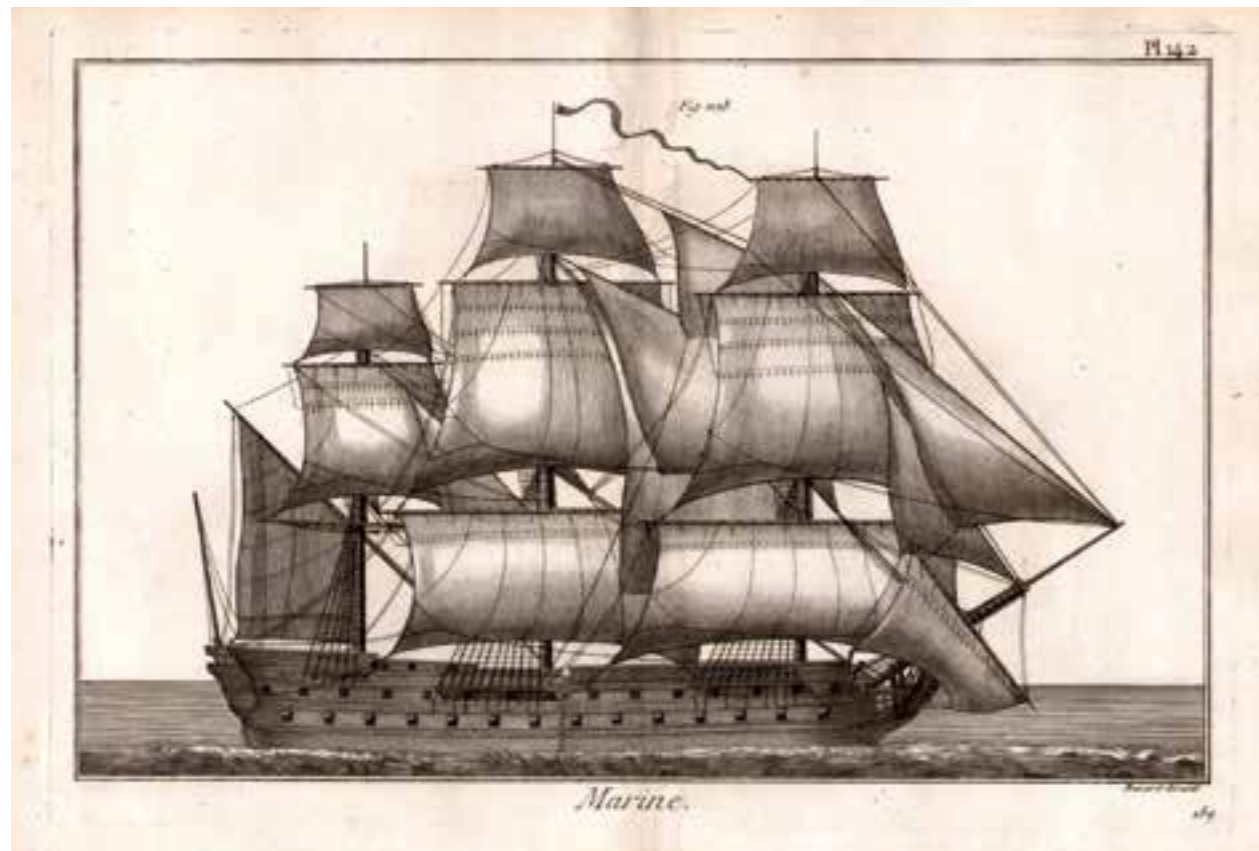
art. 857 128 28



art. 907 36 28



Portoguesa



art. 856 128 28



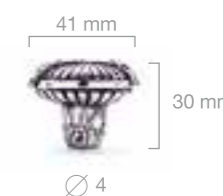
art. 856 128 27



art. 906 36 28



art. 906 36 27





Castellana



art. 850 128 28

Collezione di Maniglia e pomello ispirata al decoro floreale nella lavorazione a sbalzo italiana del 1300. Fusione di ottone interamente cesallata a mano, viene realizzato in due versioni: con finitura Oro antico, e con finitura Argento antico.

Handle and knob collection inspired from decor of italian floral embossing in 1300. Brass melting fully engraved by hand, is available in two versions: with antique Gold finish, and Antique silver finish.

Design Stefano Ferretto.



art. 850 128 27



art. 900 27

art. 900 28





Hispaniola

Collezione di maniglie e pomello, con decori marini di conchiglie e onde, ispirata allo stile del lusso coloniale del 1600 spagnolo. Interamente cesallato a mano viene realizzato in due versioni: con finitura Argento antico e con finitura Oro lucido antico.

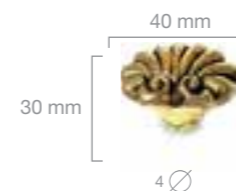
Collection of handles and knob, with marine decorations of shells and waves, inspired by the style of colonial Spanish luxury in 1600. Entirely chiseled by hand is realized in two versions: with antique Silver finish and polished Gold antique finish.

art. 852 128 28



art. 852 128 27

art. 902 27



art. 902 28

Maniglie Handles

La maniglia per il mobile classico è il cuore stesso della storia della nostra Azienda. In oltre quarant'anni di attività abbiamo dato forma a svariate centinaia di modelli al fianco dei migliori artigiani, restauratori e progettisti italiani del mobile d'Arte. La gamma di modelli Ferretto Handles copre qualsiasi esigenza stilistica e decorativa del Cliente. La vastissima scelta di varianti, misure e tipi di finitura rende il nostro assortimento una delle più complete collezioni di maniglie per il mobile in Stile.

The handle for classic furniture is the heart of the history of our company. In over forty years of activity we have given shape to many hundreds of models alongside the best craftsmen, restorers and Italian designers of the furniture of Art. The range of models Ferretto Handles covers all the needs of the customer about decoration and style. The wide range of variants, sizes and types of finish makes our selection one of the most comprehensive collections of handles for furniture in style.





art. 303
Finitura / Finishing 12



- | | | | |
|----|-------|----|-------|
| 01 | 34 mm | 01 | 23 mm |
| 02 | 29 mm | 02 | 20 mm |
| 03 | 24 mm | 03 | 17 mm |
| 04 | 16 mm | 04 | 14 mm |
- Ø 4



art. 216 96 12 sx



art. 216 64 12 sx





art. 136 01 02

c/filetto - c/foro — with thread - with hole



art. 136 02 02

c/filetto - c/foro — with thread - with hole



art. 136 01 13



art. 136 02 13

259 01 02



259 02 02



080 96 12



Code	length lunghezza mm	hole to hole interasse	diameter diametro	width larghezza mm
259 01	85			70
259 02	70			60
0 80 96	130	96		35
382 30			30	25



382 30 12

maniglie
handles



art. 091 96 12

art. 091 00 12



art. 091 96 16



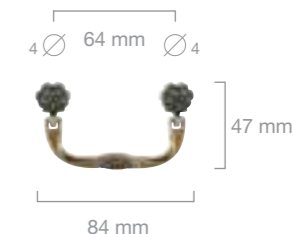
art. 091 00 16



art. 121 96



art. 121 64





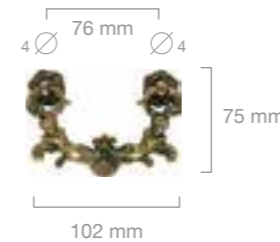


art. 204 01



art. 220 01

art. 204 02



art. 220 02



art. 204 03





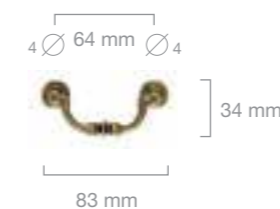
art. 206 96



art. 281 96



art. 277 64



art. 281 64



art. 143 96



art. 235 00

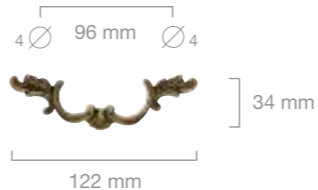


art. 143 64





art. 231 128



art. 233 01



art. 233 02



art. 231 96



art. 224 96



art. 231 64

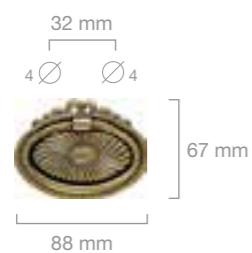


art. 224 64

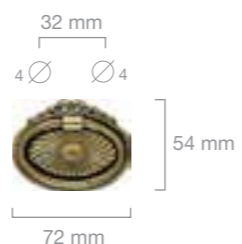




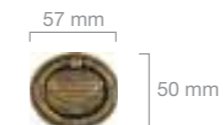
art. 219 01



art. 219 02



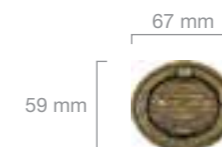
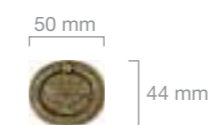
art. 251 02



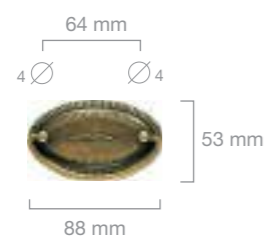
art. 251 01



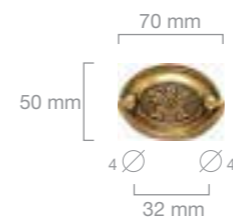
art. 251 03



art. 230 64



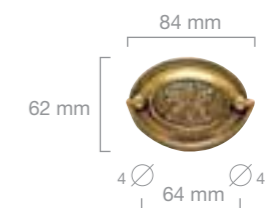
art. 230 32



art. 109 32



art. 109 64





art. 249 46



art. 249 38



art. 247 56



art. 247 40



art. 250 52



art. 250 40



art. 246 52



art. 260 00



56 mm



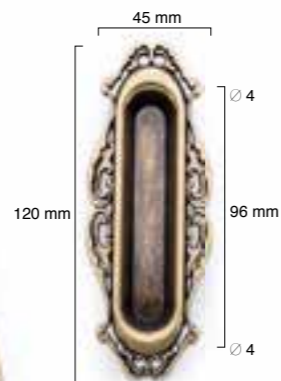
art. 105 64



art. 105 96



art. 100 96 12



art. 381 00 12



art. 101 96 12

serie
Corona



art. 533 46 12



art. 677 10 12



art. 530 42 12



Profondità incasso
Build in depth 12 mm



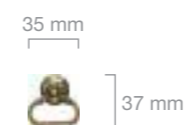
art. 168 96 12



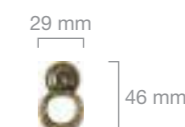
art. 382 30 12



art. 256 00



art. 266 00



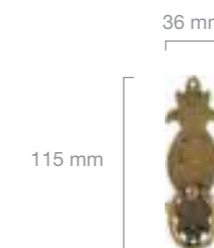
art. 295 64



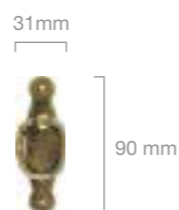
art. 237 64



art. 237 02



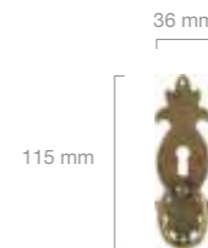
art. 237 05



art. 279 00



art. 237 01





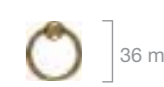
art. 201 01



48 mm



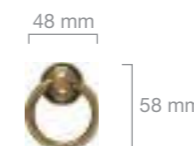
art. 201 02



36 mm



art. 210 01

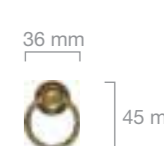


48 mm

58 mm



art. 210 02



36 mm

45 mm



art. 211 01

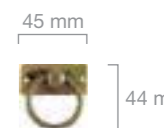


48 mm

54 mm



art. 211 02



45 mm

44 mm



art. 255

01 48 mm
02 40 mm
03 30 mm
04 22 mm



art. 261

01 62 mm
02 52 mm
03 44 mm



01 50 mm
02 44 mm
03 37 mm



art. 202 01

54 mm



46 mm



art. 202 02

54 mm



45 mm



Assemblato - Assembled

art. 263

02 52 mm
03 44 mm



01 44 mm
02 41 mm



Non assemblato - Not assembled

art. 263

01 62 mm
02 52 mm
03 44 mm



01 56 mm
02 47 mm
03 41 mm



art. 254

51 mm



50 mm



art. 267

01 41 mm
02 33 mm



01 45 mm
02 38 mm



art. 262

01 62 mm
02 50 mm
03 44 mm



01 48 mm
02 40 mm
03 35 mm



art. 288

01 48 mm
02 40 mm
03 30 mm
04 22 mm



01 54 mm
02 47 mm
03 35 mm
04 27 mm



art. 268

02 52 mm
03 44 mm



01 52 mm
02 46 mm
03 40 mm



art. 270

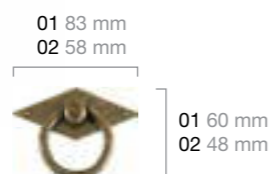
01 51 mm
02 40 mm



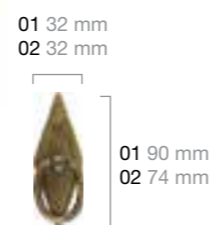
01 50 mm
02 37 mm



art. 120



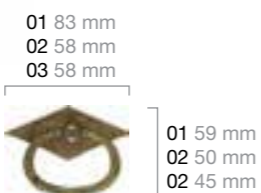
art. 285



art. 225 96



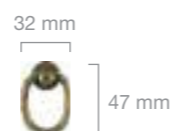
art. 264



art. 225 64



art. 287

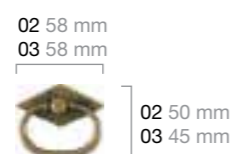


art. 226 96

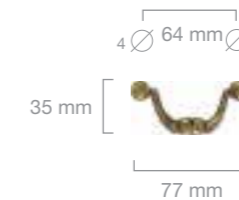


art. 264 02

Assemblato - Assembled



art. 226 64





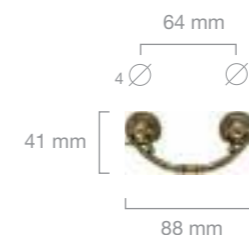
art. 252 01



art. 223 96



art. 252 02



art. 223 64



art. 240 01



art. 257 00



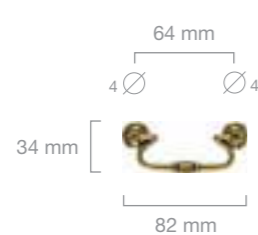
art. 240 02



art. 106 96



art. 242 01



art. 106 64



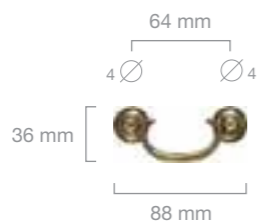
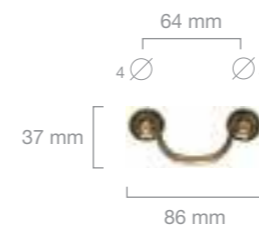
art. 242 02



art. 280 96



art. 242 03

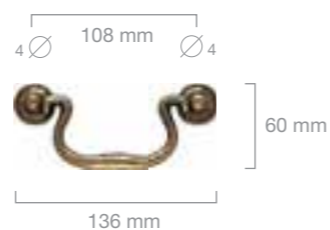


art. 280 64

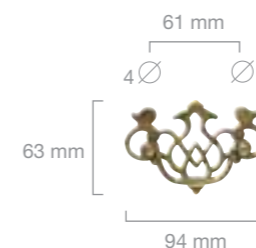




art. 239 01



art. 245 01



art. 245 02



art. 239 02



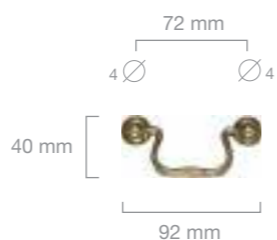
art. 265 01



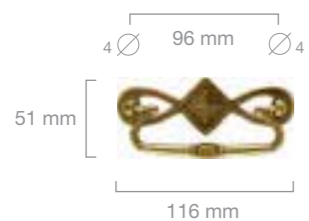
art. 265 02



art. 239 03



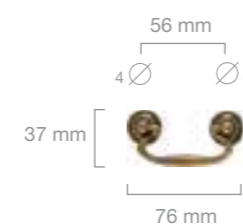
art. 107 96



art. 236 01



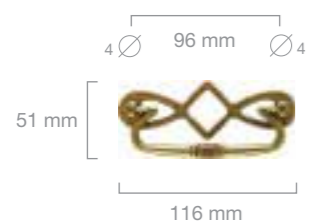
art. 107 64



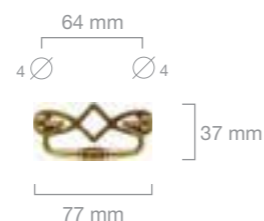
art. 236 02



art. 108 96



art. 108 64





art. 111 96



art. 238 01



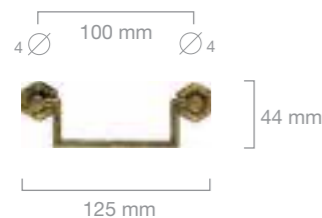
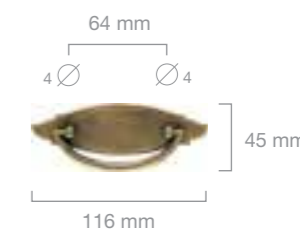
art. 111 64



art. 238 02



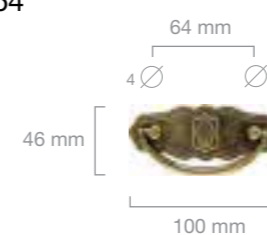
art. 241 64



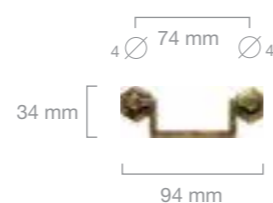
art. 269 01



art. 276 64

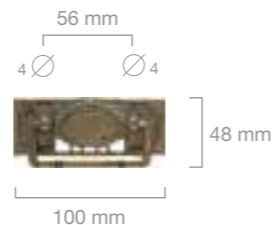


art. 269 02

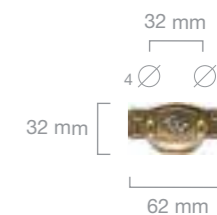
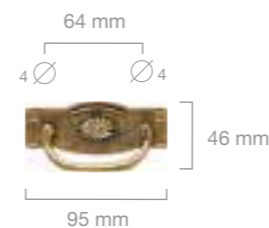




art. 258 01



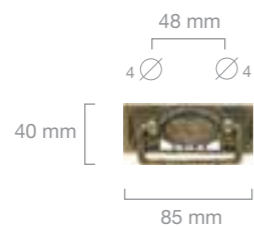
art. 221 64



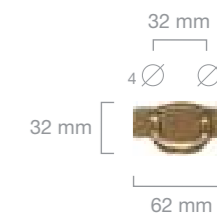
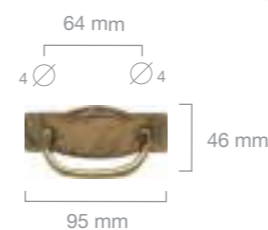
art. 221 32



art. 258 02
Assemblata - Assembled



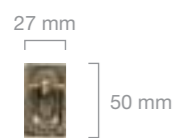
art. 297 64



art. 297 32



art. 258 03



art. 258 04



art. 258 05





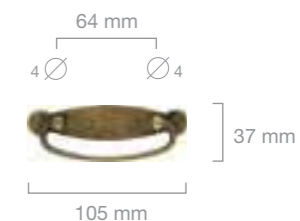
art. 229 01



art. 229 02



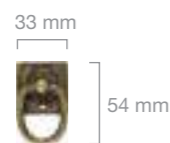
art. 278 01



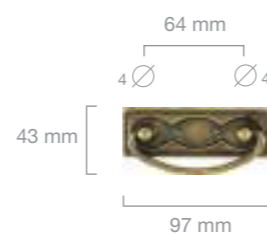
art. 278 02



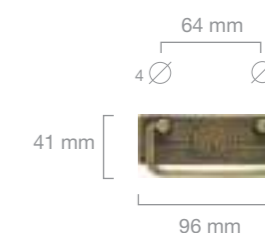
art. 229 03



art. 228 64



art. 298 64



Classic

Pomoli Knobs

In piccoli oggetti, in piccoli dettagli, c'è la grande esperienza e tutto lo stile dei prodotti Ferretto Handles.

La sapiente maestria tecnica dei nostri operatori, la perfezione delle lavorazioni di filettatura, assemblaggio, lucidatura, l'eccellenza delle materie prime e delle tecniche di decorazione e finitura. Tutto questo si ritrova nei nostri pomoli, un piccolo oggetto realizzato con una grande passione.

In small objects, small details, there is a great experience and the whole style of the products Ferretto Handles.

The skilful technical mastery of our operators, the perfection of threading, assembling, polishing, the excellence of the raw materials and the techniques of decoration and finish. All of this can be found in our knobs, a small object made with a great passion.





art. 300



art. 304



art. 301



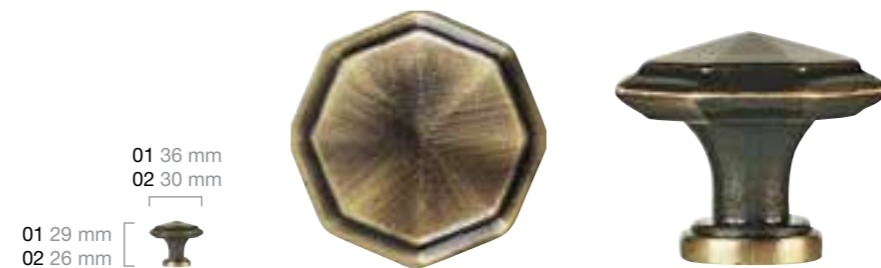
art. 311



art. 302




art. 312



art. 309



- 01 34 mm
 - 02 29 mm
 - 03 24 mm
 - 04 16 mm
- 
- 01 23 mm
 - 02 20 mm
 - 03 17 mm
 - 04 14 mm


art. 303



- 01 45 mm
 - 02 37 mm
 - 03 32 mm
 - 04 25 mm
 - 05 17 mm
- 
- 01 33 mm
 - 02 31 mm
 - 03 26 mm
 - 04 23 mm
 - 05 18 mm


art. 317



- 01 35 mm
 - 02 30 mm
 - 03 26 mm
 - 04 19 mm
- 
- 01 22 mm
 - 02 21 mm
 - 03 20 mm
 - 04 13 mm


art. 305



- 01 37 mm
 - 02 29 mm
 - 03 24 mm
- 
- 01 24 mm
 - 02 22 mm
 - 03 22 mm


art. 330



- 01 30 mm
 - 02 27 mm
 - 03 19 mm
- 
- 01 22 mm
 - 02 18 mm
 - 03 15 mm


art. 306



- 01 38 mm
 - 02 32 mm
 - 03 25 mm
- 
- 01 35 mm
 - 02 30 mm
 - 03 23 mm


art. 331



- 01 38 mm
 - 02 33 mm
 - 03 30 mm
 - 04 25 mm
 - 05 18 mm
- 
- 01 26 mm
 - 02 22 mm
 - 03 18 mm
 - 04 18 mm
 - 05 14 mm

art. 308




- 01 30 mm
 - 02 24 mm
- 
- 01 20 mm
 - 02 18 mm

art. 343




art. 313




- 01 34 mm
 - 02 31 mm
 - 03 25 mm
 - 04 16 mm
- 
- 01 23 mm
 - 02 22 mm
 - 03 19 mm
 - 04 15 mm



art. 314

- 01 38 mm
 - 02 32 mm
 - 03 28 mm
 - 04 22 mm
 - 05 17 mm
- 
- 01 28 mm
 - 02 24 mm
 - 03 22 mm
 - 04 20 mm
 - 05 15 mm

art. 320

- 26 mm
 - 20 mm
- 




- 01 45 mm
 - 02 39 mm
 - 03 31 mm
 - 04 27 mm
 - 05 24 mm
 - 06 17 mm
- 01 23 mm
 - 02 23 mm
 - 03 23 mm
 - 04 20 mm
 - 05 19 mm
 - 06 14 mm
- 




art. 315



art. 345

- 26 mm
 - 20 mm
- 


art. 338


- 32 mm
 - 24 mm
- 



art. 318



- 01 39 mm
 - 02 30 mm
 - 03 21 mm
- 
- 01 24 mm
 - 02 21 mm
 - 03 15 mm


- 01 30 mm
 - 02 25 mm
- 01 23 mm
 - 02 22 mm
- 



art. 346



art. 339

- 32 mm
 - 24 mm
- 



01 30 mm
02 25 mm
01 26 mm
02 25 mm

art. 310



30 mm
27 mm

art. 323

01 30 mm
02 25 mm
01 18 mm
02 17 mm



art. 319

26 mm
22 mm



art. 332



01 30 mm
02 24 mm
01 18 mm
02 18 mm

art. 344



26 mm
19 mm

art. 335

01 30 mm
02 25 mm
01 24 mm
02 24 mm



art. 352

27 mm
24 mm



art. 336

art. 366



01 25 mm
02 20 mm
01 24 mm
02 18 mm

art. 369



25 mm
23 mm



01 35 mm
02 30 mm
03 25 mm
04 20 mm



01 28 mm
02 24 mm
03 20 mm
04 17 mm

art. 324



01 28 mm
02 22 mm
03 18 mm
04 14 mm



01 21 mm
02 19 mm
03 16 mm
04 12 mm

art. 322

01 37 mm
02 31 mm
03 24 mm



art. 327

31 mm
23 mm



art. 333



01 37 mm
02 31 mm



01 21 mm
01 20 mm

art. 334



01 35 mm
02 28 mm



01 22 mm
01 20 mm

art. 353

30 mm
25 mm

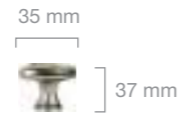


art. 337

30 mm
30 mm



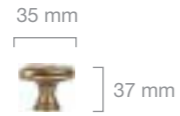
art. 354



art. 347 00 16



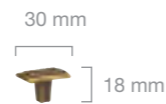
art. 326 32 12



art. 347 00 12

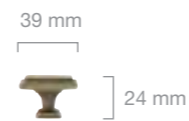


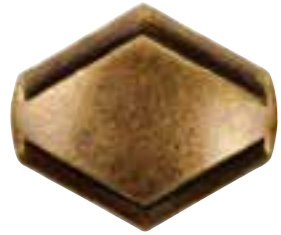
art. 326 32 16



art. 362 00 12

art. 368





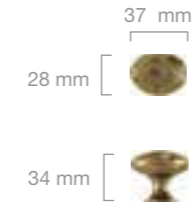
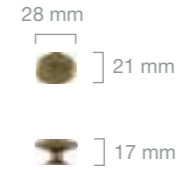
art. 321



art. 325



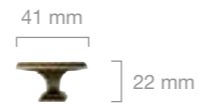
art. 328



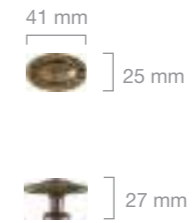
art. 340



art. 349



art. 341



art. 329



art. 351

art. 316 32



art. 342 32



art. 348 32



BU 009 50 16



BU 009 35 16



BU 008 60 16



Code	length lunghezza mm	height altezza mm	depth larghezza mm	diameter diametro mm
BU 008	60	40	35	
BU 009	41	40		50
BU 009	30	30		35

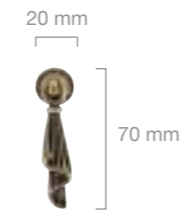
Pendenti Pendant

Oggetto di ricercata eleganza nel mobile artistico del primo 800, il pendente è una raffinata alternativa alla maniglia. Il fregio dei decori di gusto impero o le linee morbide dello stile europeo racchiudono la piacevole pesantezza al tatto del batacchio.

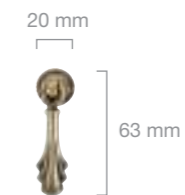
Object of refined elegance in the mobile art of the first 800, the pendant is a fine alternative to handle. Decorations of the frieze in empire style or the soft lines of the European-style frame the pleasant feel of heavy clapper.



art. 414



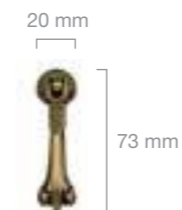
art. 415



art. 418



art. 419



art. 420





art. 609 10



art. 411 01



art. 412 01



art. 411 02



art. 412 02



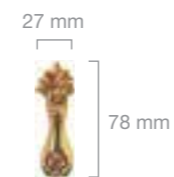
art. 421 01



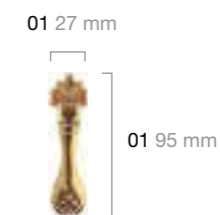
art. 421 02



art. 410 02



art. 410 01

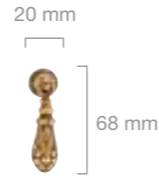




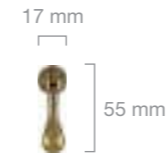
art. 401



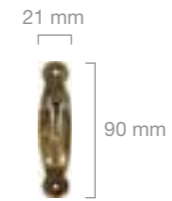
art. 417



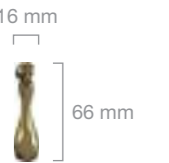
art. 404



art. 405



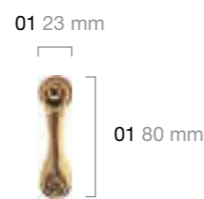
art. 407



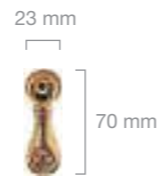
art. 413



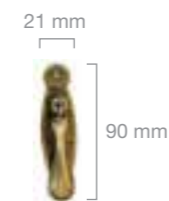
art. 409 01



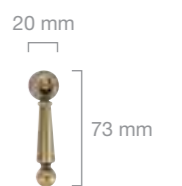
art. 409 02



art. 408



art. 416



Classic

Chiavi Keys

"La chiave è universalmente un simbolo del potere, la sua storia è l'essenza stessa dell'evoluzione estetica dell'oggetto che da strumento diventa elemento decorativo e simbolico. Le collezioni di chiavi Ferretto Handles è una raccolta delle più note ed apprezzate soluzioni stilistiche che appartengono alla storia del mobile d'Arte, sono anche una raccolta di oggetti che possiedono una propria spiccata personalità stilistica capaci di conferire ai mobili più semplici una forza estetica unica.

The key is universally a symbol of power, its history is the very essence of the aesthetic evolution of the object, that as an instrument becomes a decorative and symbolic item. The collection of keys Ferretto Handles is a collection of the most recognized design solutions that belong to the history of the furniture of Art, are also a collection of objects that have their own distinct personality style able to give to the simpler furniture a unique aesthetic force." great passion.



art. 502

46 mm
42 mm
33 mm
35 mm
Ø 6 mm



art. 507

46 mm
42 mm
33 mm
38 mm
Ø 6 mm



art. 518

46 mm
42 mm
33 mm
36 mm
Ø 6 mm



art. 523

46 mm
42 mm
33 mm
33 mm
Ø 6 mm



art. 510

52 mm
46 mm
42 mm
33 mm
39 mm
Ø 6 mm



art. 515

52 mm
46 mm
42 mm
33 mm
32 mm
Ø 6 mm



art. 524

46 mm
42 mm
33 mm
34 mm
Ø 6 mm



art. 527

52 mm
46 mm
42 mm
38 mm
Ø 6 mm



art. 516

52 mm
46 mm
42 mm
33 mm
22 mm
37 mm
Ø 6 mm



art. 528

46 mm
42 mm
33 mm
36 mm
Ø 6 mm



art. 504

52 mm
46 mm
42 mm
33 mm
29 mm
Ø 6 mm



art. 514

42 mm
33 mm
27 mm
Ø 6 mm



art. 501

52 mm
46 mm
42 mm
33 mm
30 mm
Ø 6 mm



art. 512

46 mm
33 mm
22 mm
25 mm
Ø 6 mm



art. 503

46 mm
37 mm
Ø 6 mm



art. 530

52 mm
42 mm
36 mm
Ø 6 mm



art. 508

52 mm
46 mm
42 mm
33 mm
29 mm
Ø 6 mm



art. 531

46 mm
42 mm
38 mm
Ø 6 mm



art. 525

52 mm
42 mm
30 mm
Ø 6 mm



art. 526

52 mm
42 mm
30 mm
Ø 6 mm



art. 517

46 mm
33 mm
33 mm
Ø 6 mm



art. 532

52 mm
42 mm
27 mm
Ø 6 mm



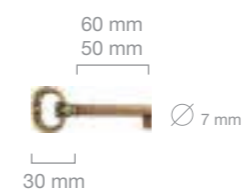
art. 505



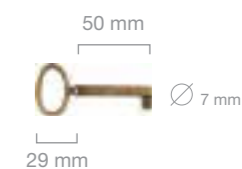
art. 506 ø6



art. 520



art. 521



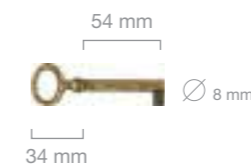
art. 509



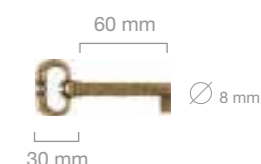
art. 511



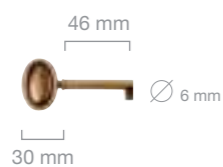
art. 500



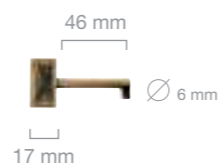
art. 519



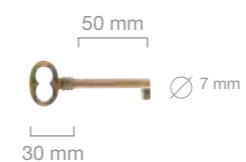
art. 513



art. 529



art. 522



art. 506 ø7



Bocchette Key escutcheons

Un componente fondamentale del mobile in stile.
Il sigillo di proprietà, il simbolo del possesso delle cose.
Grande attenzione ci fu infatti in passato in tutta la storia del
mobile d'arte nella decorazione della bocchetta, fidata custo-
de con il suo enigma metallico.

A fundamental component of the furniture in style.
The seal of ownership, the symbol of the possession of
things. Great attention in the past there was indeed in the
whole history of art furniture in the decoration of the Key
escutcheons, trusted guardian with his metal enigma.



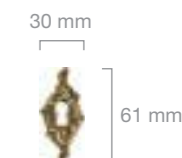
art. 649 10



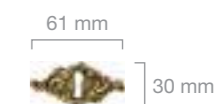
art. 649 11



art. 658 10



art. 658 11



art. 680 11



art. 680 10





art. 620



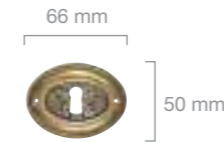
art. 621



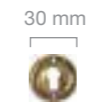
art. 624



art. 626



art. 659



art. 663



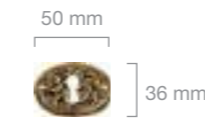
art. 660



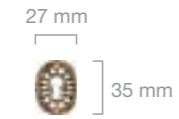
art. 661



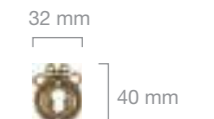
art. 667



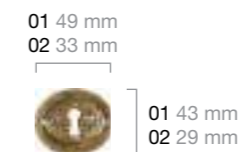
art. 668



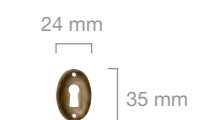
art. 669



art. 666



art. 690







art. 603 01

art. 603 02

art. 603 11



art. 605 10



art. 601 01



31 mm
197 mm

art. 601 02



17 mm
119 mm

art. 604 10



23 mm
114 mm

art. 608 10



24 mm
67 mm

art. 602 01



20 mm
175 mm

art. 602 02



15 mm
132 mm

art. 636



01 26 mm
02 23 mm
01 121 mm
02 87 mm

art. 613 11



25 mm
89 mm

art. 604 11



114 mm
23 mm

art. 635



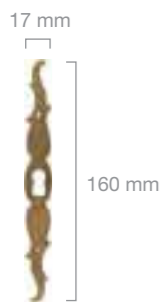
01 15 mm
02 14 mm
01 128 mm
02 92 mm

art. 613 10



25 mm
89 mm

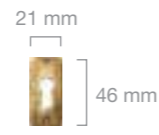
art. 629 01



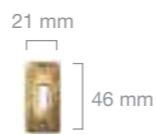
art. 629 02



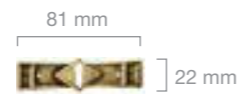
art. 686 10FG



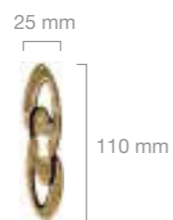
art. 686 10FP



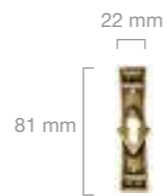
art. 611 11



art. 698 10



art. 611 10



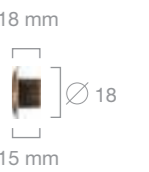
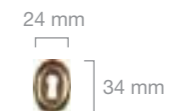
art. 672 01



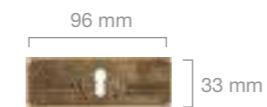
art. 672 02



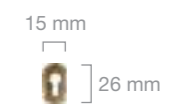
art. 685



art. 672 11



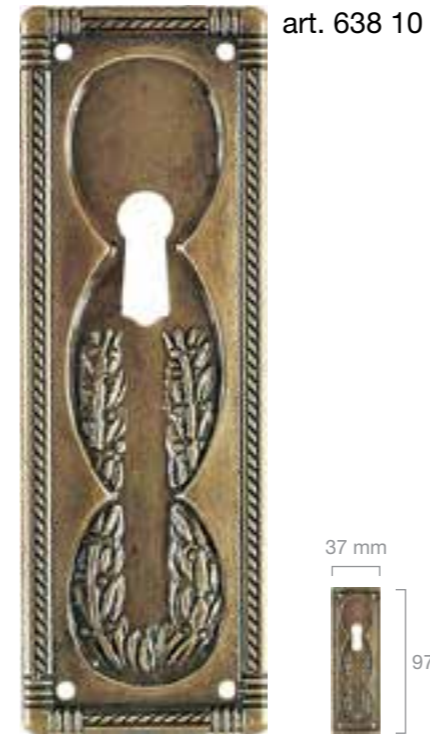
art. 689



Entrées cuivre fondu dessins aux 2/3



bocchette
key escutcheons



art. 633 10F.P.



art. 633 10F.G.



art. 607



art. 637 10



art. 637 11



art. 614 11



art. 614 10



art. 684

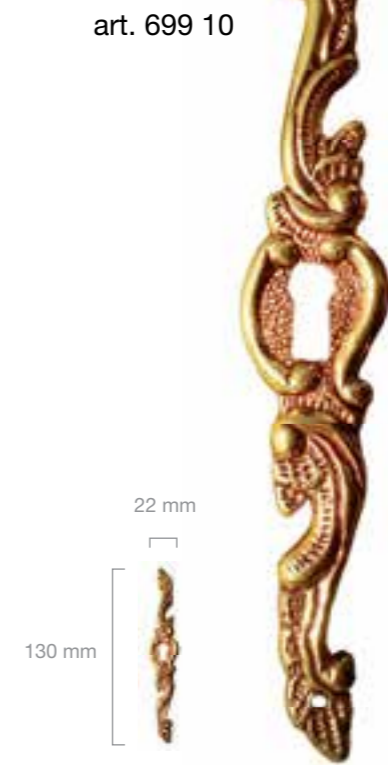
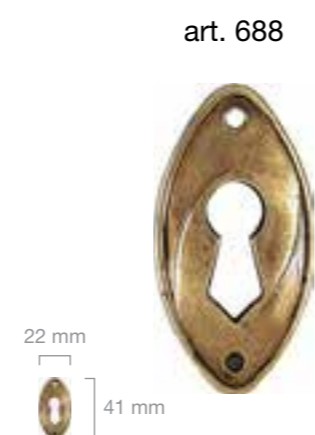
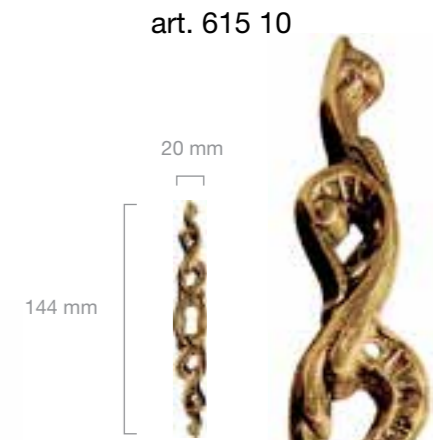


art. 687

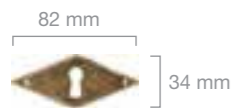


art. 691





art. 679 11



art. 679 10F.G.



art. 679 10F.P.



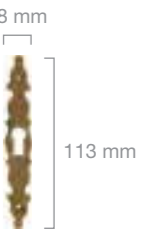
art. 610 10



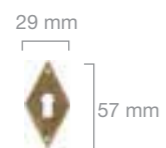
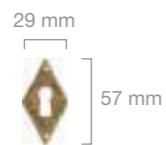
art. 697 10



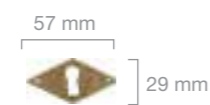
art. 682



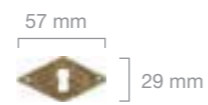
art. 681 10F.G.



art. 681 10F.P.



art. 681 11F.G.



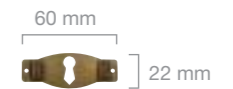
art. 681 11F.P.



art. 696 10



art. 696 11



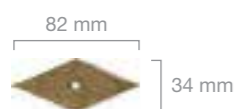
Per Ferretto Handles I piccoli dettagli, placche, montanti, così come i piccoli accessori di minuteria che completano ogni fornitura, sono molto importanti e nel selezionare e testare ogni piccolo componente ci mettiamo tutta l'attenzione e la passione.

Per ogni ordine di qualsiasi articolo il Cliente viene seguito e consigliato sugli accessori per il fissaggio ideali, con una disponibilità a magazzino ed una competenza tecnica ineffabile.

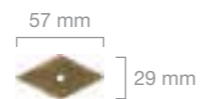
Handles For Ferretto Handles the smallest details, plates, struts, as well as small accessories or any small parts that complement the supply, are very important and to select and test each small component we get all our attention and passion.

For every order of any item, the customer is followed and advised on ideal fixing accessories, with a huge stock availability and a technical expertise ineffable.



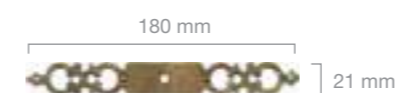


art. 679 12



art. 681 12

art. 676 01



art. 692 12

art. 702 01



art. 699 12



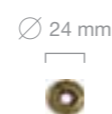
art. 676 02



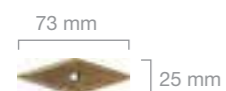
art. 606 12



art. 702 02



art. 695 12



art. 693 12

art. 339



art. 678



art. 686 12



art. 31 033 00 72

art. 697 12

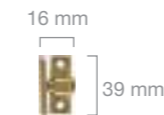


art. 613 12



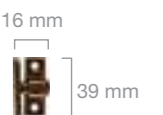
art. 35 035 00 72

ottonato - brassed



art. 35 035 00 72

bronzato - bronzed

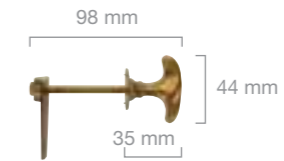




art. 719

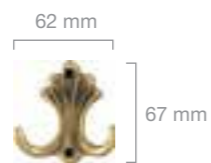


art. 402 01

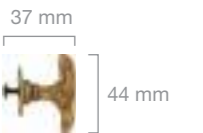


art. 402 02

art. 722



art. 673

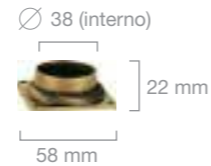




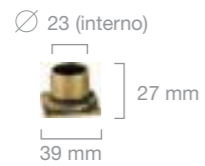
art. 710 01 A



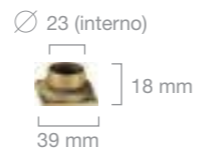
art. 710 01 B



art. 710 02 A



art. 710 02 B

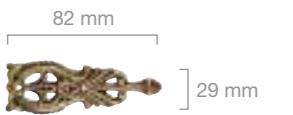


art. 711



art. 741

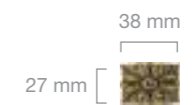
art. 740



art. 708



art. 709



Tronchetto - Cross head-screw multy-size
4 ma mm 45



Indice / Index

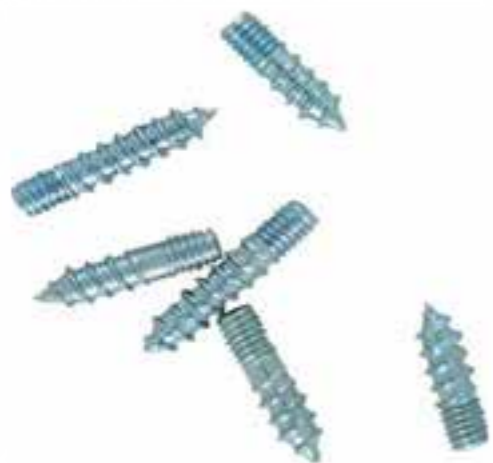
4 ma mm 10-12-15-17,5-20-22-24-25-26-
28-30-32,5-35-37-40-42-45



Vite per truciolare testa piana
Nood screw smooth head



Perno mordente - Dowel screw
4 ma mm 15-17-20-25



Chiodino - Pin 11x14
antico - antique 11x16
ottonato - brassed 11x18





Codice / Code	pag
01 32 MO 07	15
01 32 MO 19	17
01 32 MO 19	18
01 96 MO 07	15
01 96 MO 19	16
03 32 MO 19	21
03 35 MO 07	19
03 35 MO 07	21
03 96 MO 07	20
03 96 MO 19	21
07 01 30 07	98
077 128 192	111-114
077 128 192 S	115
078 128 160	112-113
079 160	142
080 96 12	211
080 96 swa 19	96
090 128 PO 23B 07	42
090 128 PO 23W 16	43
090 128 PO 24 12	39
090 128 PO 25 19	40
090 128 PO 26B 16	44
090 128 PO 26W 16	45
090 128 PO 28 31	41
090 32 PO 23B 07	42
090 32 PO 23W 16	43
090 32 PO 24 12	39
090 32 PO 25 19	40
090 32 PO 26B 16	44
090 32 PO 26W 16	45
090 32 PO 28 31	41
090 35 PO 23B 07	42
090 35 PO 23W 16	43
090 35 PO 24 12	39
090 35 PO 25 19	40
090 35 PO 26B 16	44
090 35 PO 26W 16	45
090 35 PO 28 31	41
090 96 PO 23B 07	42
090 96 PO 23W 16	43
090 96 PO 24 12	39
090 96 PO 25 19	40
090 96 PO 26B 16	44

Codice / Code	pag
090 96 PO 26W 16	45
090 96 PO 28 31	41
091 00 12	212
091 00 16	212
091 96 12	212
091 96 16	212
098 128 12	136
098 128 16	136
098 128 25	136
098 128 DIA 19	108
099 128 DIA SWA 19	108
099 128 SWA 07	94
099 128 SWA 16	94
099 128 SWA 19	94
100 96 12	226
101 96 12	227
104 96 12	185
105 64	225
105 96	225
106 64	240
106 96	240
107 64	244
107 96	244
108 64	244
108 96	244
109 32	223
109 64	223
11 55 MO 10	22
11 55 MO 15	22
11 55 MO 16	22
11 55 MO 19	22
111 64	246
111 96	246
112 48 12	178
113 01 01	183
113 02 01	183
113 75 10	183
114 02	183
117 96 DIA 19	108
118 64 04	189
118 96 06	189
120	236
121 64	213

Codice / Code	pag
121 96	213
122 00	176
122 32	176
122 96	176
127 128 04	145
127 96 04	145
127 96 SWA 16	85
128 128 12	190
128 128 LE 06 07	35
128 128 LE 09 19	35
128 64 12	190
128 96 12	190
128 96 LE 10 19	35
129 64 16	193
129 64 SWA 19	88
129 96 PO 01 07	50
129 96 PO 03 07	50
129 96 SWA 19	88
130 96 12 dx/right	157
130 96 12 dx/right	186
130 96 12 sx/left	156
130 96 16 dx/right	157
130 96 16 sx/left	156
130 96 16 sx/left	187
130 96 DIA 08 dx/right	105
130 96 DIA 08 sx/left	104
130 96 DIA 15 /left	104
130 96 DIA 15 dx/right	105
130 96 DIA 19 dx/right	105
130 96 DIA 19 sx/left	104
131 32 16	170
131 64 16	170
131 96 16	170
132 128 12	169
132 64 12	169
132 64 SWA 19	78
132 96 12	169
132 96 SWA 19	78
133 64 12	151
133 64 SWA 07	82
133 96 12	151
133 96 SWA 16	82
134 96 SWA 12	87

Codice / Code	pag
134 96 SWA 16	87
135 96 12 CO	172
135 96 16	172
136 01 02	210
136 01 13	210
136 01 20	133
136 02 02	210
136 02 13	210
138 128 BI 07	57
138 128 MA 07	58
138 128 PA 07	63
138 96 BI 07	57
138 96 MA 07	59
138 96 MP 01 07	53
138 96 MP 02 07	53
138 96 MP 03 07	53
138 96 MP 05 07	53
138 96 MP 06 07	53
138 96 PA 07	63
138 96 PO 01 07	51
138 MP 07	53
139 96 SWA 07	89
140 96 SWA 12	96
141 32 12 dx/right	163
141 32 12 sx/left	162
141 96 16 dx/right	163
141 96 16 sx/left	162
143 64	219
143 96	219
144 128	174
144 96	174
145 128 12 dx/right	157
145 128 12 sx/left	156
145 90 16 dx/right	157
145 96 DIA 15 dx/right	107
145 96 DIA 15 sx/left	106
145 96 DIA 19 dx/right	107
145 96 DIA 19 sx/left	106
146 96 12 sx/left	156
149 64 29	129
150 64 PA 07	60
151 64 12	151
151 96 12	151





Codice / Code	pag
152 64 10	182
152 96 10	182
153 128 12	154
153 96 12	154
154 128 MO 07	166
154 128 MO 19	166
155 96 12	172
155 96 16	172
157 96 12	184
160 128 12	149
160 128 16	149
160 128 PA 07	65
160 128 PA ORO 07	64
160 96 12	149
160 96 PA 07	65
160 96 PA ORO 07	64
161 96 12	148
161 96 16	148
164 96 12	159
164 96 16	159
165 96 12	152
165 96 16	152
165 96 20	133
166 96 12	158
166 96 16	158
166 96 SWA 07	81
166 96 SWA 16	81
166 96 SWA 19	81
167 64 12	153
167 64 16	153
168 96 12	160
168 96 12	228
168 96 16	160
169 160 16	140 - 141
169 160 25	132
169 96 12	140
169 96 16	141
170 96 12	160
170 96 16	160
171 96 12	159
171 96 16	159
171 96 25	132
172 128 12	150

Codice / Code	pag
172 128 SWA 07	77
172 128 SWA 07DIA	77
172 128 SWA 19	76
172 128 SWA 19 CO	76
172 128 SWA 19 DIA	76
172 128 SWA 19 PET	76
172 160 12	150
172 96 12	150
172 96 SWA 07	77
172 96 SWA 07 DIA	77
173 96 12	158
174 96 12	153
174 96 16	153
176 128	161
176 32 16	161
176 96 16	161
177 96 12	146
177 96 16	146
177 96 25	146
178 128 12	155
178 128 SWA 07	89
178 160 12	155
178 160 SWA 16	89
182 128	168
182 128 08	168
182 128 11	168
182 128 12	168
183 128 12	155
183 128 16	155
183 128 MP 05 07	54
183 128 SWA 07	84
183 128 SWA 12	83 - 84
183 128 SWA 19	84
186 64 07 sx/left	126
186 96 07 dx/right	127
186 96 07 dx/right	127
186 96 07 sx/left	126
188 00 SWA 07 sx/left	69
188 64 SWA 07 sx/left	69
188 96 SWA 07 dx/ right	68
189 128 AT FU 07	27
189 128 AT MA 07	31
189 128 AT PE 19	30

Codice / Code	pag
189 128 AT PI 07	29
189 128 AT WH 07	28
189 160 AT FU 07	27
189 160 AT MA 07	31
189 160 AT PE 19	30
189 160 AT PI 07	29
189 160 AT WH 07	28
189 64 AT FU 07	27
189 64 AT MA 07	31
189 64 AT PE 19	30
189 64 AT PI 07	29
189 64 AT WH 07	28
193 128 12	144
193 128 SWA 07	86
193 128 SWA 19	86
194 128 12	139
194 128 26	131
194 128 CO 19	109
194 128 DIA 19	109
194 128 PET 19	109
194 32 12	139
194 64 12	139
195 96 PO 17 07	48
195 96 PO 18 19	47
195 96 SWA 07	80
196 96 16	193
197 192 DIA 15	103
20 35 MO 07	15
20 35 MO 19	18
201 01	233
201 02	233
202 01	235
202 02	235
204 01	217
204 02	217
204 03	217
206 96	218
210 01	233
210 02	233
211 01	233
211 02	233
213 01	215
213 02	215

Codice / Code	pag
215 128 DX	165
215 128 SWA 07 dx/right	91
215 128 SWAP1 19 sx/left	90
215 128 SX	164
216 64 12 sx	209
216 64 SWA 16 dx/right	92
216 64 SWA 16 sx/left	92
216 96 12 sx	209
216 96 SWA12 dx	93
216 96 SWA12 sx	93
218 01	215
218 02	215
219 01	222
219 02	222
220 01	216
220 02	216
221 32	249
221 64	249
222 01	214
222 02	214
223 64	239
223 96	239
224 64	221
224 96	221
225 64	237
225 96	237
226 64	237
226 96	237
227	214
228 64	250
229 01	250
229 02	250
229 03	250
230 32	222
230 64	222
231 128	220
231 64	220
231 96	220
232 64 12	177
233 01	221
233 02	221
235 00	218
236 01	245





Codice / Code	pag
236 02	245
237 01	231
237 02	231
237 05	230
237 64	230
238 01	247
238 02	247
239 01	242
239 02	242
239 03	242
240 01	239
240 02	239
241 64	247
242 01	241
242 02	241
242 03	241
245 01	243
245 02	243
246 52	224
247 40	225
247 56	225
249 38	224
249 46	224
250 40	225
250 52	225
251 01	223
251 02	223
251 03	223
252 01	238
252 02	238
254	235
255	234
256 00	229
257 00	238
258 01	248
258 02	248
258 03	248
258 04	248
258 05	248
259 01 02	211
259 02 02	211
26 16 412 07 LEA	33
260 00	224

Codice / Code	pag
261	234
262	234
263	234
263 assemblato	234
264	236
264 02	236
265 01	243
265 02	243
266 00	229
267	235
268	235
269 01	246
269 02	246
270	235
27 128 412 07 LEA	33
27 35 07 SWA	80
27 35 PO 17 07	48
27 35 PO 18 19	47
271 96 12	174
272 64 05	192
272 64 12	171
272 96 05	192
272 96 12	171
275 96	176
275 96 PO 03 12	48
276 64	247
277 64	218
278 01	251
278 02	251
279 00	230
28 160 412 07 LEA	33
280 64	240
280 96	240
281 64	219
281 96	219
282 64 12	177
283 64 12	178
283 64 MO 12	180
283 64 MO BL 07	181
283 96 12	178
283 96 MO 12	180
283 96 MO BL 07	181
284 32 12	179

Codice / Code	pag
284 64 12	179
285	236
286 64 01	171
286 96 01	171
287	236
288	234
289 96	128
290	178
291 64 12	173
291 96 12	173
292 128 12	175
292 64 12	175
292 96 12	175
294 64 12	177
295 64	229
296 12	172
297 32	249
297 64	249
298 64	251
300	254
301	254
302	254
303	256
303 12	208
304	255
304 SWA 12	93
304 SWA 16	92
305	256
306	256
308	256
309	254
310	260
31 033 00 72	309
311	255
312	255
313	258
314	259
315	258
316 32	268
317	257
318	258
319	260
319 25 SWA 12	87

Codice / Code	pag
319 25 SWA 16	87
319 30 SWA 16	87
319 90 SWA 12	87
320	259
320 00 12	191
320 00 MP 01 07	55
320 00 MP 02 07	55
320 00 MP 03 07	55
320 00 MP 05 07	54
320 00 MP 05 07	55
320 00 PA 07	62
320 00 SWA 19	84
320 MP	55
321	266
322	263
323	261
324	262
325	266
325 00 16	193
326 32 12	265
326 32 16	185
326 32 16	185
326 32 16	265
326 MP	55
326 32 MP 01 07	55
326 32 MP 02 07	55
326 32 MP 03 07	55
326 32 MP 05 07	55
326 32 PA 07	61
326 32 PO 01 07	51
326 32 SWA 07	73
326 32 SWA 16	73
326 32 SWA 19 CO	79
327	262
328	267
329	266
330	257
330 30 05	192
331	257
332	261
333	263
334	262
335	261





Codice / Code	pag
336	261
337	262
338	259
339	259
339	308
340	267
341	267
342 32	268
343	257
344	260
345	259
346	258
347 00 12	264
347 00 16	187
347 00 16	264
347 00 DIA 15	107
347 00 DIA 19	106
348 32	268
348 32 MP 01 07	55
348 32 MP 02 19	55
348 32 MP 03 19	55
348 32 MP 05 07	55
348 32 PA 07	61
348 32 PO 01 07	51
348 MP	55
349	266
349 00 04	189
349 00 SWA 16	85
350 128 12	173
350 16 12	173
350 64 12	173
35 035 00 72 bronzato	309
35 035 00 72 ottonato	309
351	267
352	260
353	263
354	263
355 16 SWA 07	75
355 16 SWA 19	74
355 24 SWA 07	75
355 24 SWA 19	74
355 35 SWA 07	75
355 35 SWA 19	74

Codice / Code	pag
357 35 07	125
357 70 SWA 07	72
357 70 SWA 19	72
358	113
361 00 BI 07	59
361 00 MA 07	63
361 00 PA 07	50
361 00 PO 01 07	50
361 00 PO 03 07	169
362 00 12	264
362 00 12	78
362 00 SWA 19	154
363 26 12	184
364 32 12	184
365 32 12	115
366	260
368	265
369	261
370 00 12	158
371 00 12	140
371 00 16	141
372 00 12	148
372 00 16	148
375 36 12	144
375 36 SWA 07	86
375 36 SWA 07	91
375 36 SWA 19	86
375 36 SWAP1 19	90
375 46 12	144
375 46 15	165
375 46 16	164
375 46 SWA 07	86
375 46 SWA 07	91
375 46 SWA 19	86
375 46 SWAP1 19	90
376 30 SWA 07	97
376 30 SWA 19	97
376 30 SWA 29	97
377 36 12	147
377 36 16	147
377 36 25	147
377 36 DIA 19	108
381 00 12	226

Codice / Code	pag
382 30 12	211
382 30 12	228
382 30 swa 19	96
384 32	114
384 32 S	115
385 35	142
388 38 12	137
388 38 16	137
388 38 25	137
388 38 DIA 19	108
390 32 SWA 19	73
399 38 DIA SWA 19	108
399 38 SWA 07	95
399 38 SWA 16	95
399 38 SWA 19	95
401	274
402 01	311
402 02	311
404	275
405	275
407	275
408	275
409 01	274
409 02	274
410	274
410 01	273
410 02	273
411 01	272
411 02	272
412 01	272
412 02	272
413	274
414	271
415	271
416	275
417	274
418	271
419	271
419 00 04	188
420	271
421 01	273
421 02	273
500	283

Codice / Code	pag
501	281
502	278
503	280
504	280
505	282
505 46 04	188
506 diametro 6 mm.	282
506 diametro 7 mm.	283
507	278
508	281
509	282
510	278
511	282
511 42 12	191
511 42 MP 05 07	54
511 42 SWA 16	85
511 42 SWA 19	84
512	281
513	282
513 46 05	192
514	280
515	278
516	278
517	281
518	279
519	283
520	283
521	283
522	283
523	279
524	279
525	280
526	280
527	279
528	279
529	282
530	280
530 42 12	226
531	226
531 46 16	281
532	281
533 46 12	186
600	300





Codice / Code	pag
601 01	292
601 02	292
602 01	293
602 02	293
603 01	291
603 02	291
603 03	291
603 11	291
604 10	292
604 11	292
605 10	291
605 11	291
606 12	307
607	298
608 10	292
608 10 SWA 16	85
609 10	272
610 10	303
610 10 04	188
611 10	294
611 11	294
611 11 12	191
612	290
613 10	293
613 11	293
613 12	308
614 10	299
614 11	299
614 12	305
614 13	305
615 10	301
620	286
621	286
623 01	289
623 02	289
623 11	289
624	286
626	287
627	300
628 10	290
628 11	290
629 01	294
629 02	294

Codice / Code	pag
630	289
631	290
632	289
633 10F.G	298
633 10F.P	298
634 10	296
634 11	296
635	293
636	293
637 10	299
637 11	299
638 10	297
638 11	297
639 10	289
639 11	289
642	290
649 10	285
649 11	285
658 10	285
658 11	285
659	287
660	286
661	286
662 10	288
662 11	288
663	287
664	290
665 10	288
665 11	288
666	287
667	287
668	287
669	287
671 10	288
671 11	288
672 01	295
672 02	295
672 11	295
673	311
674	300
675 09	297
675 10	297
675 11	297

Codice / Code	pag
676 01	307
676 02	307
677 10 12	226
678	308
679 11	302
679 12	306
679 10F.G	302
679 10F.P	302
680 10	285
680 11	285
681 10F.G	302
681 10F.P	302
681 11F.G	302
681 11F.P	302
681 12	306
682	303
683 10	300
683 11	300
683 12	305
683 13	305
684	298
685	295
686 10 F.P	294
686 10F.G	294
686 12	308
687	299
688	300
689	295
690	287
691	299
692 10	301
692 11	301
692 12	306
693 10	301
693 12	306
694 10 694 11	290
694 12	305
695 10	300
695 10 05	192
695 12	307
696 10	303
696 11	303
697 10	303

Codice / Code	pag
697 12	308
698 10	294
698 10 16	186
699 10	301
699 12	307
702 01	306
702 02	306
708	313
709	313
710 01 A	312
710 01 B	312
710 02 A	312
710 02 B	312
711	312
719	310
722	310
740	313
741	313
850 128 07	200
850 128 28	201
852 128 27	204
852 128 28	205
856 128 27	199
856 128 28	199
857 128 27	197
857 128 28	197
858 160 24	123
900 27	200
900 28	201
902 27	204
902 28	205
906 36 27	199
906 36 28	199
907 36 27	197
907 36 28	197
908 35 24	123
BU 002 160	118
BU 002 224	118
BU 002 320	118
BU 002 96	118
BU 004 160	120
BU 004 224	120
BU 004 320	120





Codice / Code	pag
BU 005 160	121
BU 005 224	121
BU 005 96	121
BU 008 60 16	269
BU 009 50 16	269
BU 010 160	119
BU 010 192	119
BU 010 224	119
BU 010 320	119
BU009 35 16	269
CER 36 29	49
CER 37 12	49
KT 003 160 07	117
KT 003 160 29	117
KT 005 160 29	117
KT 005 160 07	117
KT 010 160 07	116
KT 010 224 07	116
lea 34 160 04 12	34
lea 37 01 07	34
Sistemi di fissaggio Fastening systems	314

ferretto

MADE IN ITALY

Ferretto Handles s.r.l.

Via Genova 1 37053 Cerea Verona Italy

Phone +39 0442 82777 +39 0442 325000

Fax +39 0442 31881

mail. info@ferrettohandles.it

www.ferrettohandles.it